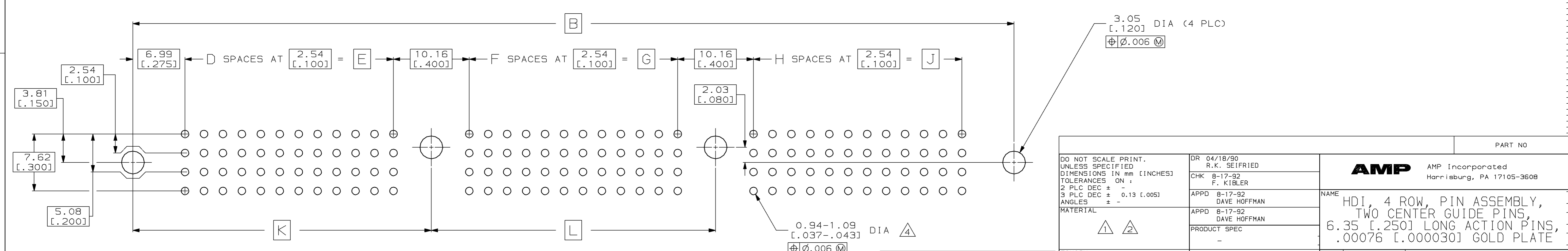
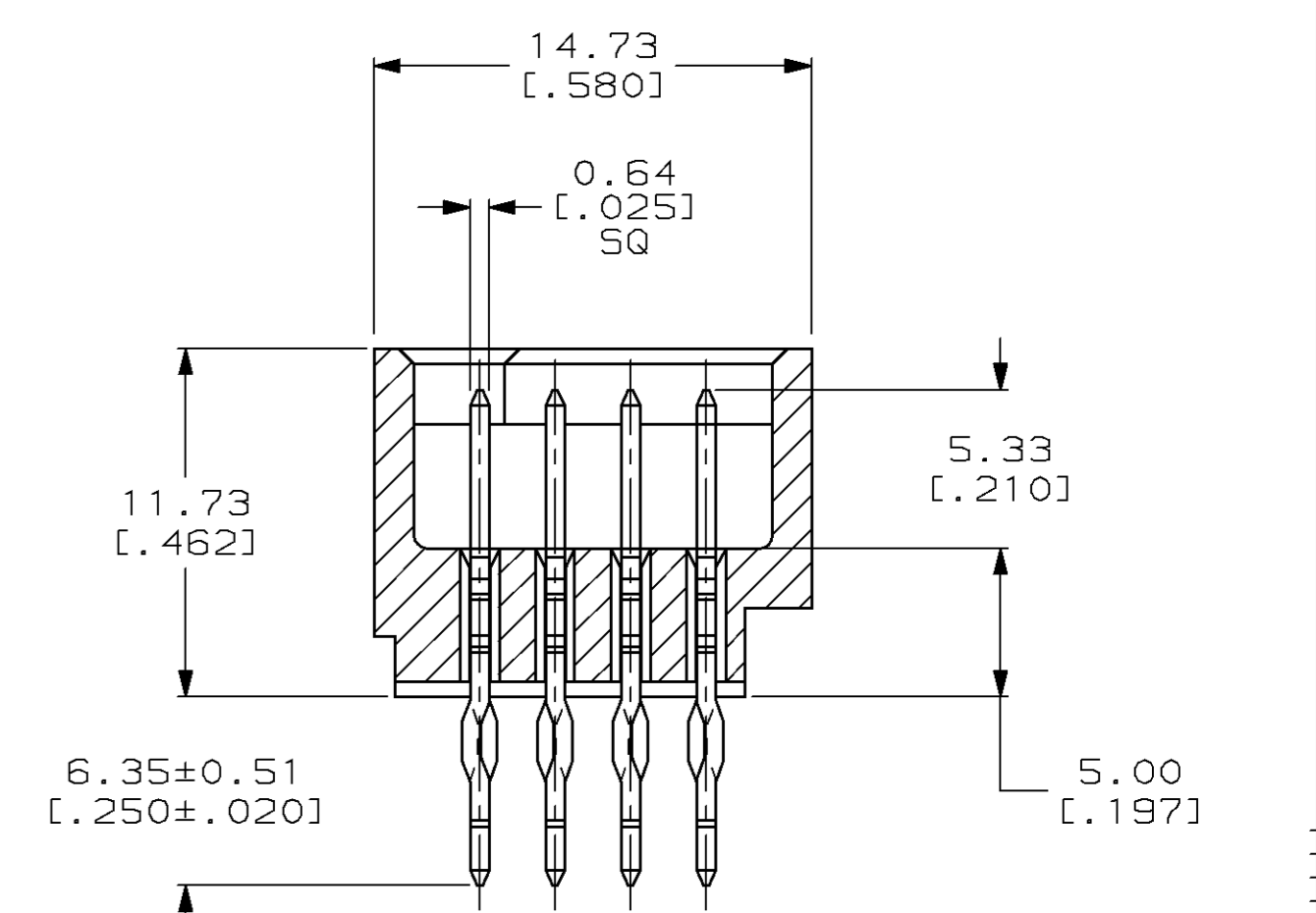
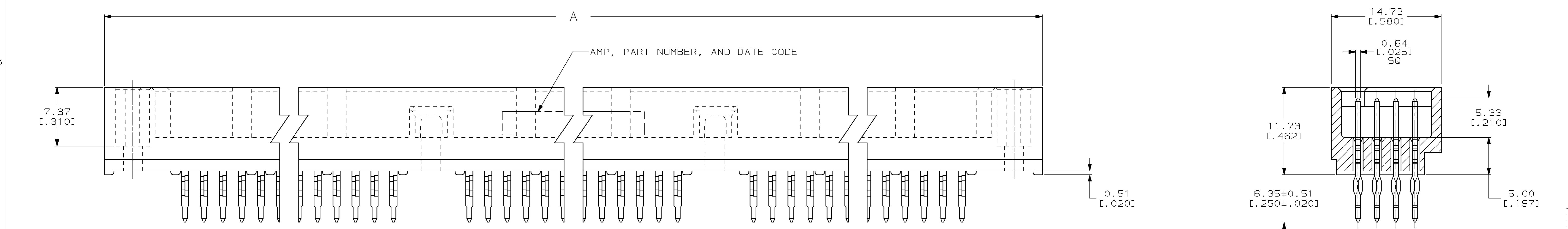
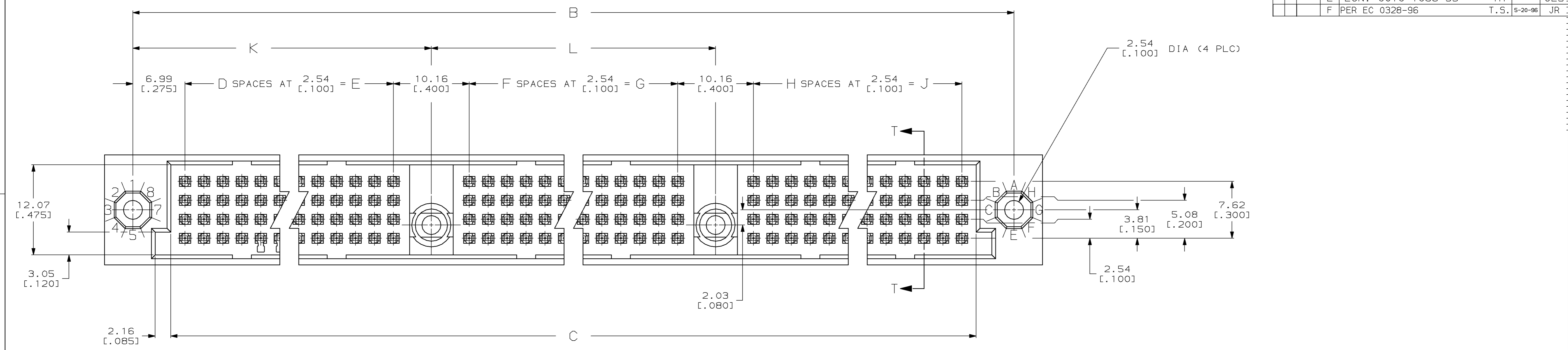
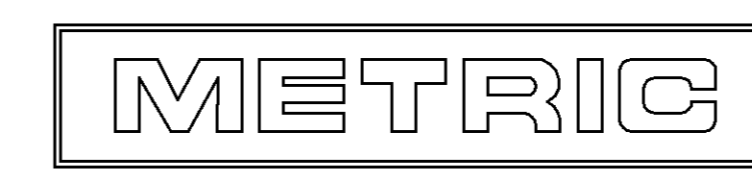


LOC		DIST		REVISIONS				
AD	25	P	F	ZONE	LTR	DESCRIPTION	DATE	APPD
					D	ECN AD4218	04/18/90	RKS
					E	ECN. 0010-1068-93	11/9/93	TH
					F	PER EC 0328-96	T.S. 5-20-96	JR



RECOMMENDED P.C. BOARD LAYOUT



DO NOT SCALE PRINT. UNLESS SPECIFIED DIMENSIONS IN mm [INCHES] TOLERANCES ON: 2 PLC DEC ± - 3 PLC DEC ± 0.13 [.005] ANGLES ± -		DR 04/18/90 R.K. SEIFRIED CHK 8-17-92 F. KIBLER APPD 8-17-92 DAVE HOFFMAN APPD 8-17-92 DAVE HOFFMAN PRODUCT SPEC - APPLICATION SPEC - WEIGHT -		<p style="text-align: center;">AMP AMP Incorporated Harrisburg, PA 17105-3608</p> <p>NAME HDI, 4 ROW, PIN ASSEMBLY, TWO CENTER GUIDE PINS, 6.35 [.250] LONG ACTION PINS, .00076 [.000030] GOLD PLATE</p>	
FINISH △	SCALE 4:1	SIZE D	CAGE CODE 00779	DRAWING NO 533448	PART NO

LOC		DIST		P		F		ZONE		LTR		REVISIONS		
AD	25											DESCRIPTION	DATE	APPD
												F SEE SHEET 1	-	-

- ① HOUSING MATERIAL: THERMOPLASTIC, COLOR-NATURAL.
- ② CONTACT MATERIAL: PHOSPHOR BRONZE.
- ③ CONTACT FINISH: .00127-.00254 [.000050-.000100] NICKEL UNDERPLATE ALL OVER; .00076 [.000030] GOLD PLATE IN CONTACT AREA, TIN-LEAD PLATED POSTS.
- ④ ACTION PIN POSTS REQUIRE 2.36 [.093] MIN THICK P.C. BOARD. RECOMMENDED P.C. BOARD HOLES ARE 1.151 [.0453] DIA PLATED THRU WITH 0.025-0.076 [.001-.003] COPPER, WITH 0.0076 [.0003] MIN TIN-LEAD PLATING; FINISHED HOLE AFTER PLATING 0.94-1.09 [.037-0.43] DIA.
- 5. DIMENSIONS IN BRACKETS ARE IN INCHES.

152.40 [6.000]	154.30 [6.075]	142.24 [5.600]	56	142.24 [5.600]	56	142.24 [5.600]	56	450.85 [17.750]	461.01 [18.150]	468.63 [18.450]	684	533448-8
147.32 [5.800]	149.22 [5.875]	137.16 [5.400]	54	137.16 [5.400]	54	137.16 [5.400]	54	435.61 [17.150]	445.77 [17.550]	453.39 [17.850]	660	533448-7
142.24 [5.600]	144.14 [5.675]	132.08 [5.200]	52	132.08 [5.200]	52	132.08 [5.200]	52	420.37 [16.550]	430.53 [16.950]	438.15 [17.250]	636	533448-6
137.16 [5.400]	139.06 [5.475]	127.00 [5.000]	50	127.00 [5.000]	50	127.00 [5.000]	50	405.13 [15.950]	415.29 [16.350]	422.91 [16.650]	612	533448-5
132.08 [5.200]	133.98 [5.275]	121.92 [4.800]	48	121.92 [4.800]	48	121.92 [4.800]	48	389.89 [15.350]	400.05 [15.750]	407.67 [16.050]	588	533448-4
127.00 [5.000]	128.90 [5.075]	116.84 [4.600]	46	116.84 [4.600]	46	116.84 [4.600]	46	374.65 [14.750]	384.81 [15.150]	392.43 [15.450]	564	533448-3
121.92 [4.800]	123.82 [4.875]	111.76 [4.400]	44	111.76 [4.400]	44	111.76 [4.400]	44	359.41 [14.150]	369.57 [14.550]	377.19 [14.850]	540	533448-2
116.84 [4.600]	118.74 [4.675]	106.68 [4.200]	42	106.68 [4.200]	42	106.68 [4.200]	42	344.17 [13.550]	354.33 [13.950]	361.95 [14.250]	516	533448-1
L	K	J	H	G	F	E	D	C	B	A	POSN	PART NUMBER

DO NOT SCALE PRINT. UNLESS SPECIFIED DIMENSIONS IN mm [INCHES] TOLERANCES ON:		DR 04/18/90 R.K. SEIFRIED		AMP AMP Incorporated Harrisburg, PA 17105-3608	
2 PLC DEC ± -		CHK 8-17-92 F. KIBLER			
3 PLC DEC ± 0.13 [.005]		APPD 8-17-92 DAVE HOFFMAN		NAME HDI, 4 ROW, PIN ASSEMBLY, TWO CENTER GUIDE PINS, 6.35 [.250] LONG ACTION PINS, .00076 [.000030] GOLD PLATE	
ANGLES ± -		APPD 8-17-92 DAVE HOFFMAN		SIZE D 00779 533448	
MATERIAL		PRODUCT SPEC -		CAGE CODE 00779	
FINISH		APPLICATION SPEC -		DRAWING NO 533448	
WEIGHT -		SCALE 4:1		SHEET 20F2	

