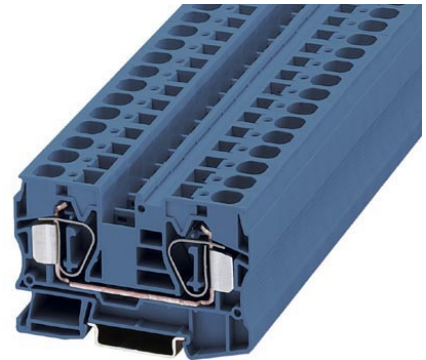


## ST 16 BU

Order No.: 3036152

<http://eshop.phoenixcontact.de/phoenix/treeViewClick.do?UID=3036152>

Feed-through modular terminal block, Type of connection: Spring-cage connection, Spring-cage connection, Cross section: 0.2 mm<sup>2</sup> - 25 mm<sup>2</sup>, AWG 24 - 4, Width: 12.2 mm, Color: blue, Mounting type: NS 35/7,5, NS 35/15



Commercial data	
EAN	4017918821081
Pack	50 pcs.
Customs tariff	85369010
Weight/Piece	0.0377 KG
Catalog page information	Page 77 (CL-2009)

### Product notes

WEEE/RoHS-compliant since:  
01/01/2003



<http://www.download.phoenixcontact.com>  
Please note that the data given here has been taken from the online catalog. For comprehensive information and data, please refer to the user documentation. The General Terms and Conditions of Use apply to Internet downloads.

Technical data	
<b>General</b>	
Number of levels	1
Number of connections	2
Color	blue
Insulating material	PA
Inflammability class acc. to UL 94	V0

**Dimensions**

Width	12.2 mm
Length	80 mm
Height NS 35/7,5	51 mm
Height NS 35/15	58.5 mm

**Technical data**

Maximum load current	90 A (with 25 mm <sup>2</sup> conductor cross section)
Rated surge voltage	8 kV
Pollution degree	3
Surge voltage category	III
Insulating material group	I
Connection in acc. with standard	IEC 60947-7-1
Nominal current I <sub>N</sub>	76 A
Nominal voltage U <sub>N</sub>	800 V
Open side panel	ja

**Connection data**

Conductor cross section solid min.	0.2 mm <sup>2</sup>
Conductor cross section solid max.	25 mm <sup>2</sup>
Conductor cross section stranded min.	0.2 mm <sup>2</sup>
Conductor cross section stranded max.	16 mm <sup>2</sup>
Conductor cross section AWG/kcmil min.	24
Conductor cross section AWG/kcmil max	4
Conductor cross section stranded, with ferrule without plastic sleeve min.	0.25 mm <sup>2</sup>
Conductor cross section stranded, with ferrule without plastic sleeve max.	16 mm <sup>2</sup>
Conductor cross section stranded, with ferrule with plastic sleeve min.	0.25 mm <sup>2</sup>
Conductor cross section stranded, with ferrule with plastic sleeve max.	16 mm <sup>2</sup>
2 conductors with same cross section, stranded, TWIN ferrules with plastic sleeve, min.	1.5 mm <sup>2</sup>
2 conductors with same cross section, stranded, TWIN ferrules with plastic sleeve, max.	4 mm <sup>2</sup>
Type of connection	Spring-cage connection
Stripping length	18 mm
Internal cylindrical gage	A7

**Certificates / Approvals**

Certification

BV, CB, CSA, CUL, DNV, GL, GOST, KR, LR, NK, UL, VDE-PZI

Certification Ex:

IECEX, KEMA-EX

**CSA**

Nominal voltage $U_N$	600 V
Nominal current $I_N$	85 A
AWG/kcmil	16-4

**CUL**

Nominal voltage $U_N$	600 V
Nominal current $I_N$	85 A
AWG/kcmil	16-4

**UL**

Nominal voltage $U_N$	600 V
Nominal current $I_N$	85 A
AWG/kcmil	16-4

**Accessories**

Item	Designation	Description
<b>Assembly</b>		
3036657	D-ST 16	End cover, Length: 80 mm, Width: 2.2 mm, Height: 51.1 mm, Color: gray
<b>Bridges</b>		
3005950	FBS 2-12	Cross connector/bridge, Number of positions: 2, Color: red
3030886	RB ST 16-(2,5/4)	Cross connector/bridge, Number of positions: 2, Color: red
<b>General</b>		
0812146	ZB 12,LGS:L1-N,PE	Zack marker strip, printed horizontally: 5-section, L1, L2, L3, N, PE, color: White

**Marking**

0812133	ZB 12:SO/CMS	Zack marker strip, 5-section, divisible, special printing, marking according to customer requirements
0812120	ZB 12:UNPRINTED	Zack marker strip, unprinted: 5-section, for individual labeling with M-PEN, ZB-T or CMS system, sufficient for 100 terminal blocks per pack
0810038	ZBF 12:SO/CMS	Zack marker strip, flat, in 12 mm pitch, printed according to customer requirements, 5-section, divisible, color: white
0809735	ZBF 12:UNBEDRUCKT	Zack strip, flat, unprinted, 5-section, divisible, for labeling by the customer

**Plug/Adapter**

0201731	MPS-IH BK	Insulating sleeve, for MPS metal part, Color: black
0201689	MPS-IH BU	Insulating sleeve, for MPS metal part, Color: blue
0201702	MPS-IH GN	Insulating sleeve, for MPS metal part, Color: green
0201728	MPS-IH GY	Insulating sleeve, for MPS metal part, Color: gray
0201676	MPS-IH RD	Insulating sleeve, Color: red
0201715	MPS-IH VT	Insulating sleeve, for MPS metal part, Color: violet
0201663	MPS-IH WH	Insulating sleeve, for MPS metal part, Color: white
0201692	MPS-IH YE	Insulating sleeve, for MPS metal part, Color: yellow
0201744	MPS-MT	Metal part

**Tools**

1206612	SZF 3-1,0X5,5	Screwdriver, blade: 1.0 x 5.5 x 100 mm, length 180 mm
---------	---------------	---

**Diagrams/Drawings**

Circuit diagram



Approbationslogos (EX-Bereich)

---



**Address**

PHOENIX CONTACT Inc., USA  
586 Fulling Mill Road  
Middletown, PA 17057, USA  
Phone (800) 888-7388  
Fax (717) 944-1625  
<http://www.phoenixcon.com>



© 2010 Phoenix Contact  
Technical modifications reserved;