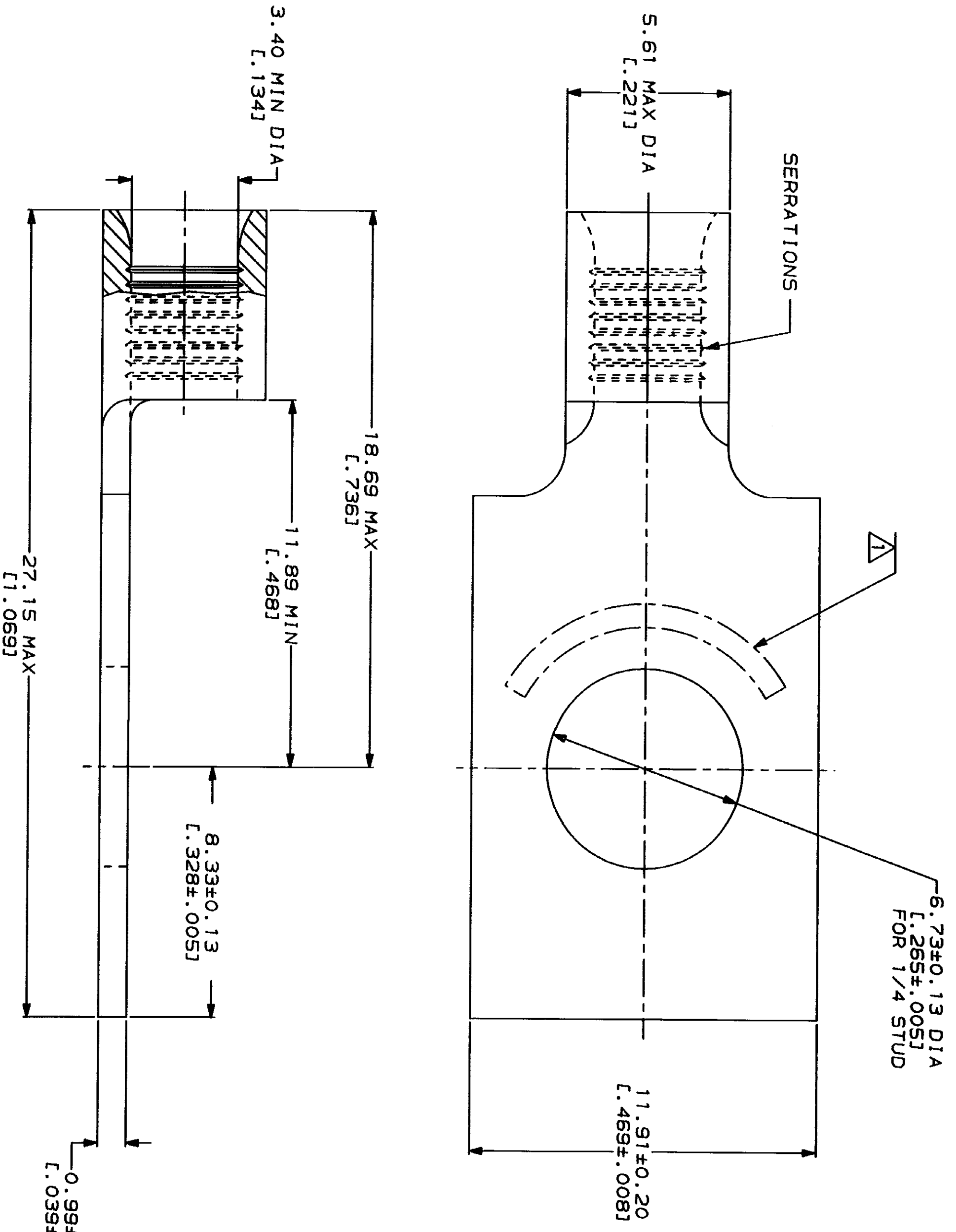


LOC	DIST	REV	ZONE	LTR	DESCRIPTION	DATE	APPD
G	14		A		REVISED PER 0720-0230-93	2/28/94	DAP

METRIOR
 DIMENSIONS LISTED IN mm [INCHES]

AMP WIRE RANGE 12-10 AWG STRANDED	UL E13288 Listed
LR7189 Certified	MILITARY P/N AND CLASS
NOT CERTIFIED	NOT APPLICABLE

△ STAMP AMP 12-10* APPROX AS SHOWN



AMP INCORPORATED
 CUSTOMER SERVICE SYSTEMS

FOR ADDITIONAL PRODUCT INFORMATION OR COPIES OF DRAWINGS AND TECHNICAL DOCUMENTS	PRODUCT INFORMATION CENTER 1-800-522-6752
FOR APPLICATION TOOLING INFORMATION	TOOLING ASSISTANCE CENTER 1-800-722-1111
FOR ORDER ENTRY	1-800-526-5142

MAX RECOMMENDED OPERATING
TEMPERATURE:
170°C MAX

VOLTAGE RATING:
NOT APPLICABLE

WIRE CROSS SECTIONAL AREA RANGE:
2.62-6.64mm² (S, 180-13, 100) CIR MILS
STRANDED

THIS DRAWING IS A CONTROLLED DOCUMENT FOR
USE IN THE MANUFACTURING OF AMP PRODUCTS.
IT IS THE RESPONSIBILITY OF THE USER TO
OBTAIN THE LATEST REVISION.

DO NOT SCALE PRINT.
UNLESS SPECIFIED
DIMENSIONS IN - (THICKNESS -
TOLERANCES ON -
2 PLC DEC ± -
3 PLC DEC ± -
ANGLES ± -

MATERIAL
COPPER PER
ASTM B-152
ANNEALED

FINISH
TIN PLATE
0.00254 [L.000100] MIN
THK PER MIL-T-10727

DR 1-29-93
TA BRINKMAN
CHK 1-29-93
DA PATTERSON
APPD 1-29-93
DE MILLER
APPD 1-29-93
JL HECKLEY
PRODUCT SPEC

AMP
AMP Incorporated
Harrisburg, PA 17105-3508

TERMINAL, RECTANGULAR
TONGUE, BUDGET

APPLICATION SPEC	SIZE	CAGE CODE	DRAWING NO
WEIGHT	SCALE	00779	G-320822
	8:1		

320822
PART NO