

ADAM-6050

ADAM-6051

ADAM-6052

18-ch Isolated Digital I/O Module

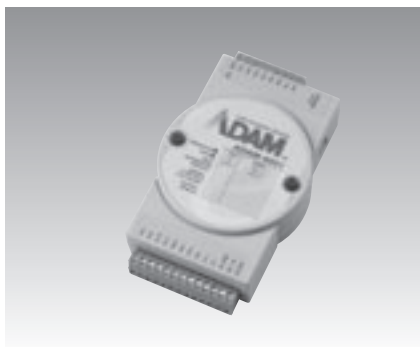
16-ch Isolated Digital I/O w/Counter Module

16-ch Source Type Digital I/O Module



ADAM-6050

CE FCC



ADAM-6051

CE FCC



ADAM-6052

CE FCC

Specifications

General

- Power Consumption 2 W @ 24 V_{DC}
- Watchdog Timer Yes, programmable (comm.)

Digital Input

- Channels 12
- Dry Contact Logic level 0: close to GND
Logic level 1: open
- Wet Contact Logic level 0: 3 V max
Logic level 1: 10 ~ 30 V_{DC}

Digital Output

- Channels 6
- Open Collector to 30 V, 100 mA max. load
- Power Dissipation 300 mW for each module

Ordering Information

- ADAM-6050 18-ch Isolated Digital I/O Module

Specifications

General

- Power Consumption 2 W @ 24 V_{DC}
- Watchdog Timer Yes, programmable (comm.)

Counter

- Channels 2
- Maximum Count 4,294,967,285(32 bit)
- Input Frequency 0.3 ~ 4500 Hz max. (frequency mode)
4500 Hz max. (counter mode)
- Modes Counter, Frequency

Digital Input

- Channels 12
- Dry Contact Logic level 0: close to GND
Logic level 1: open
- Wet Contact Logic level 0 : +3 V max
Logic level 1 : +10 V to 30 V_{DC}

Digital Output

- Channels 2
- Open Collector to 30 V, 100 mA max. load
- Power Dissipation 300 mW for each module

Ordering Information

- ADAM-6051 16-ch Isolated Digital I/O with Counter Module

Specifications

General

- Power Consumption 2 W @ 24 V_{DC}
- Watchdog Timer Yes, programmable (comm.)

Digital Input

- Channels 8
- Dry Contact Logic level 0: close to GND
Logic level 1: open
- Wet Contact Logic level 0 : +3 V max
Logic level 1 : +10 V to 30 V_{DC}

Digital Output

- Channels 8
- V_{DC} 35 V (Source Type)
- Current 1 A

Ordering Information

- ADAM-6052 16-ch Source Type Digital I/O Module

Common Specifications

General

- Certifications CE, FCC class A
- Connectors 1 x RJ-45 (LAN)
Plug-in screw terminal block (I/O, and power)
10/100Base-T
- LAN
- LED Indicators Power and communication
- Power Input Unregulated 10 ~ 30 V_{DC}

Digital Input

- Support 3kHz Counter Input
- Support 3kHz Frequency Input
- Support Invert DI Status

Digital Output

- Support 1kHz Pulse Output
- Support High-to-Low Delay Output
- Support Low-to-High Delay Output

Protection

- Power Reversal Protection
- Power Reversal Protection
- Isolation Voltage 2,000 V_{DC}

Environment

- Humidity (Operating) 20 ~ 95% RH (non-condensing)
- Humidity (Storage) 0 ~ 95% RH (non-condensing)
- Operating Temperature -10 ~ 70° C
- Storage Temperature -20 ~ 80° C