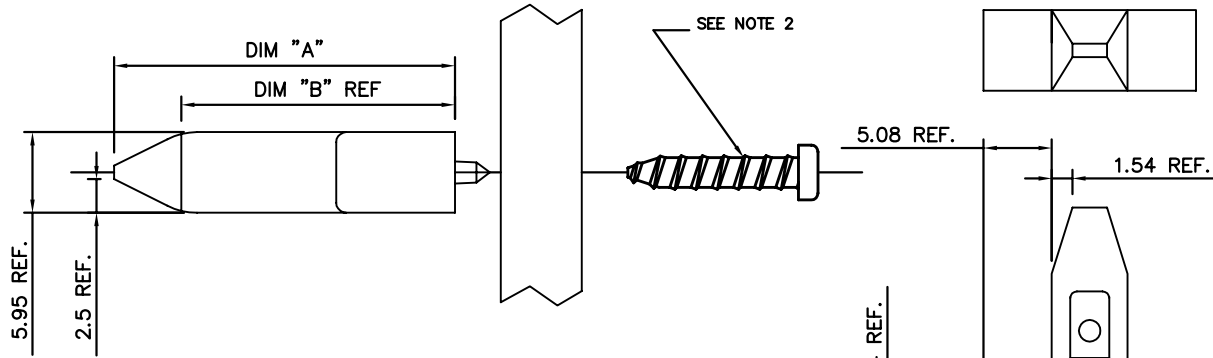
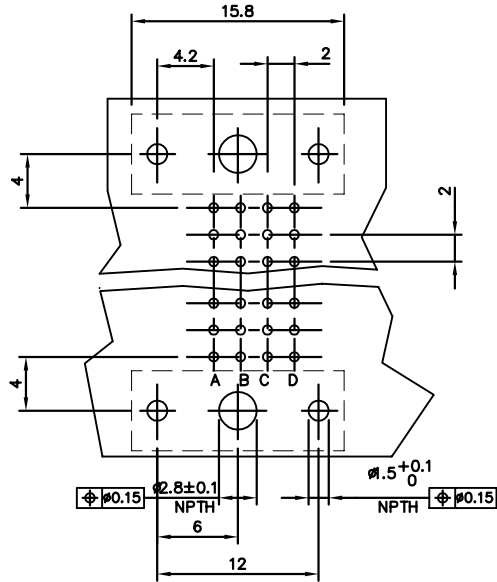


PRODUCT NUMBER	DIM "A"	DIM "B"
88910-011	25.30 REF.	20.36 REF.
88910-012	33.15 REF.	28.06 REF.
88910-011LF	25.30 REF.	20.36 REF.
88910-012LF	33.15 REF.	28.06 REF.

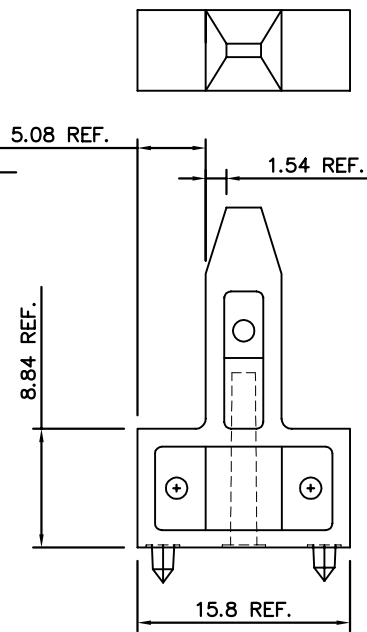
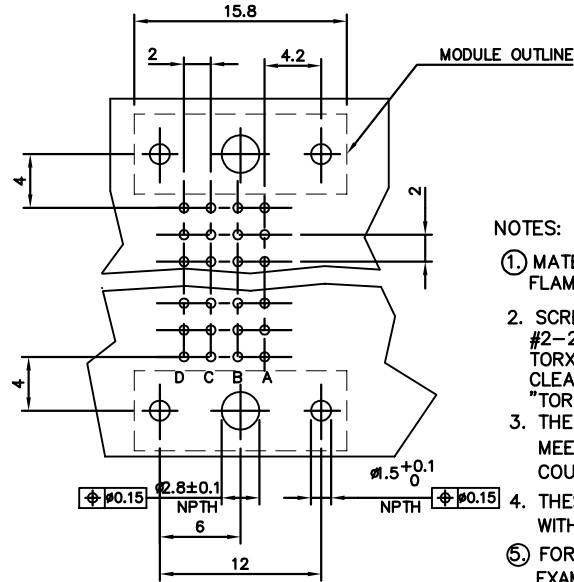


1. MODULE LOCATION FOR PLUG-IN UNITS WITH COMPONENTS MOUNTED ON THE RIGHT HAND SIDE

2. MODULE LOCATION FOR CP WITH COMPONENTS MOUNTED ON THE LEFT HAND SIDE



RECOMMENDED HOLE PATTERN COMPONENT SIDE



NOTES:

- MATERIAL: NYLON 6/12, 30% GF, NATURAL FLAME RETARDANT ACC. UL-94-V0
- SCREW INFORMATION; #2-28 X 9/16" LONG, PLASTITE SELF-TAPPING, SINGLE HELIX, TORX DRIVE PAN HEAD SCREW, STEEL W/ZINC PLATING AND CLEAR CHROMATE FINISH. SUPPLIED WITH MODULE "TORX SCREW REQUIRES SIZE T8 DRIVER".
- THE PRODUCTS WHERE THE PART NUMBERS END IN LF MEET THE EUROPEAN UNION DIRECTIVES AND OTHER COUNTRY REGULATIONS AS DESCRIBED IN GS-22-008.
- THESE PRODUCTS LISTED ON THIS DRAWING WILL NOT WITHSTAND WAVE SOLDER OR REFLOW OPERATIONS.
- FOR LEADFREE PART NUMBERS, ADD AN 'LF' SUFFIX. EXAMPLE: 88910-011LF

mat'l. code		surface		tolerance		projection		product family	
SEE NOTES		ASME Y14.5		ASME Y14.5		MM		MERTAL(tm)	
ltr	ecn no	dr	date	tolerances unless otherwise specified		title		sheet 1 of 1	
A	V22531	SCS	920717	angles	.XX±.13	RAMPING MODULE CONNECTOR		size A4	
B	V30024	SCS	930114	parallel	.XXX±.051	FCI		88910	
C	V80745	MDF	4/17/98	0° ±2'		scale 2:1		type CUSTOMER Drawing	
D	V90647	MDF	3/12/99	dr	STU STONER 920129				
E	V06-0245	JRV	3/13/06	engr	STU STONER 920129				
F	V06-0609	DCH	2006-06-22	chr	STU STONER 920129				
				app	STU STONER 920129				
sheet index	revision sheet	F	1						