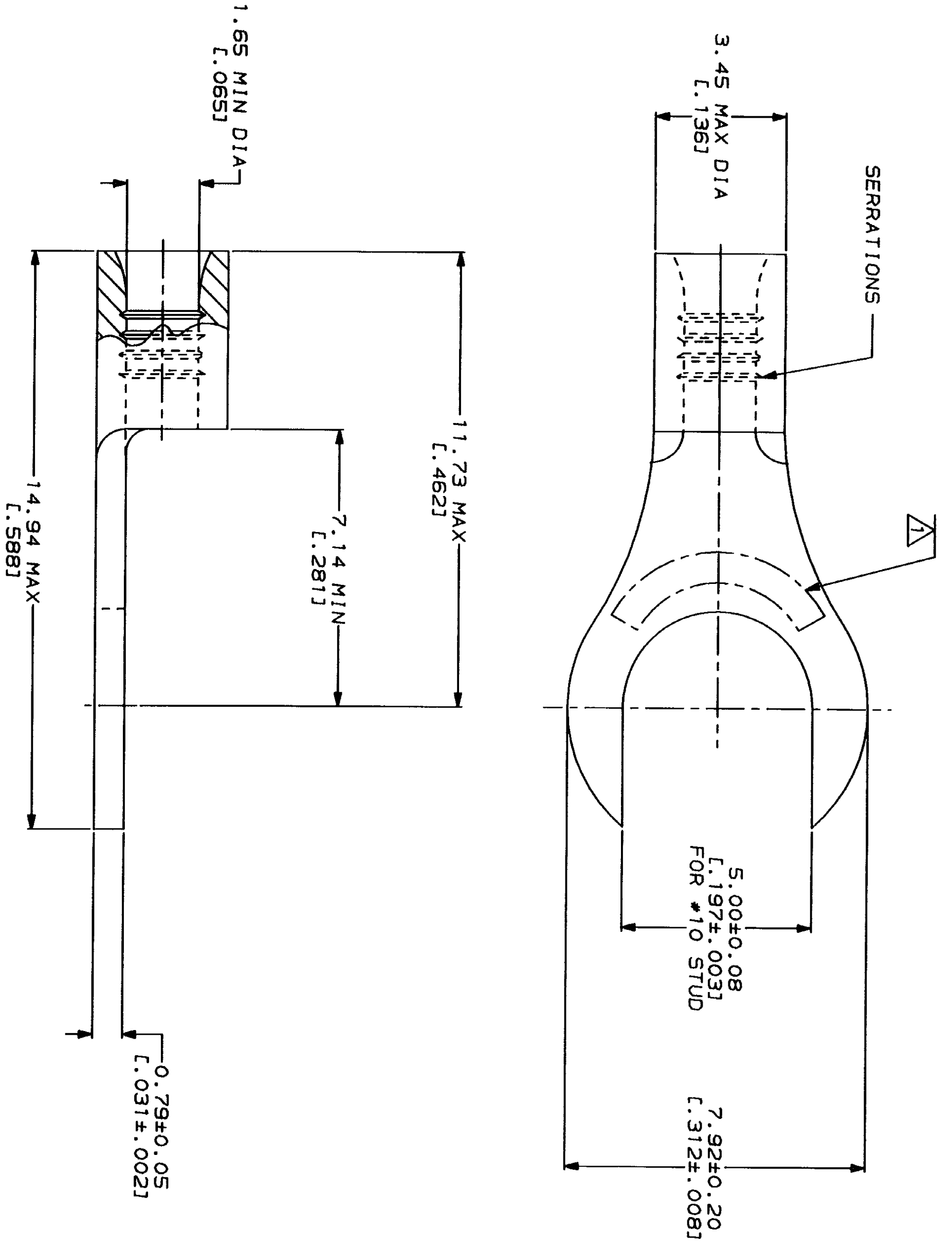


LOC	DIST	REV	ZONE	LTR	DESCRIPTION	DATE	APP'D
G	14		A		REVISED PER 0720-0230-93	2/28/94	DLP

METPRO
 DIMENSIONS LISTED IN mm [INCHES]

AMP WIRE RANGE	IL E13288 Listed
22-16 AWG STRANDED	22-16 AWG STRANDED
IL LR7189 Certified	MILITARY P/N AND CLASS
NOT CERTIFIED	NOT APPLICABLE

△ STAMP AMP 22-18* APPROX AS SHOWN
 22-16 TERMINALS ARE STAMPED 22-18 IN
 ACCORDANCE WITH MILITARY SPECIFICATION
 MIL-T-7928, COMMERCIAL WIRE RANGE IS 22-16



AMP INCORPORATED
 CUSTOMER SERVICE SYSTEMS

FOR ADDITIONAL
 PRODUCT INFORMATION OR
 COPIES OF DRAWINGS
 AND TECHNICAL DOCUMENTS
 FOR APPLICATION
 TOOLING INFORMATION
 FOR ORDER ENTRY

MAX RECOMMENDED OPERATING
 TEMPERATURE:
 170°C MAX

VOLTAGE RATING:
 NOT APPLICABLE

WIRE CROSS SECTIONAL AREA RANGE:
 0.26-1.65mm² [509-3,260] CIR MILS
 STRANDED

DO NOT SCALE PRINT.
 UNLESS SPECIFIED
 DIMENSIONS IN mm FINISHES
 TOLERANCES ON:
 2 PLG DEC ± .
 3 PLG DEC ± .
 ANGLES

MATERIAL
 COPPER PER
 ASTM B-152
 ANNEALED

DR 2-23-93
 TA BRINKMAN
 CHK 2-23-93
 DA PATTERSON
 APPD 2-23-93
 DE HILLER
 APPD 2-23-93
 JL MECKLEY
 PRODUCT SPEC

FINISH
 TIN PLATE
 0.00254 [L.000100] MIN
 THK PER MIL-T-10727

AMP
 AMP Incorporated
 Harrisburg, PA 17105-3608

TERMINAL, SLOTTED
 RING TONGUE, BUDGET

323832
 PART NO

SIZE
 CAGE CODE
 00779
 DRAWING NO
 G-323832

CUSTOMER DRAWING
 SHEET 1 OF 1