

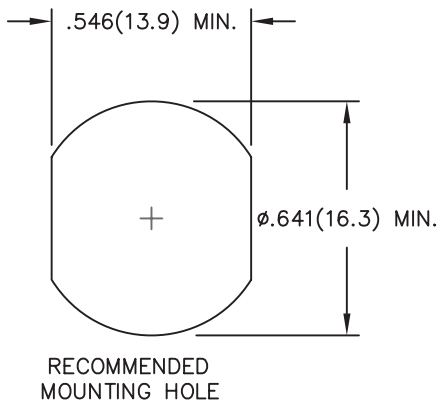
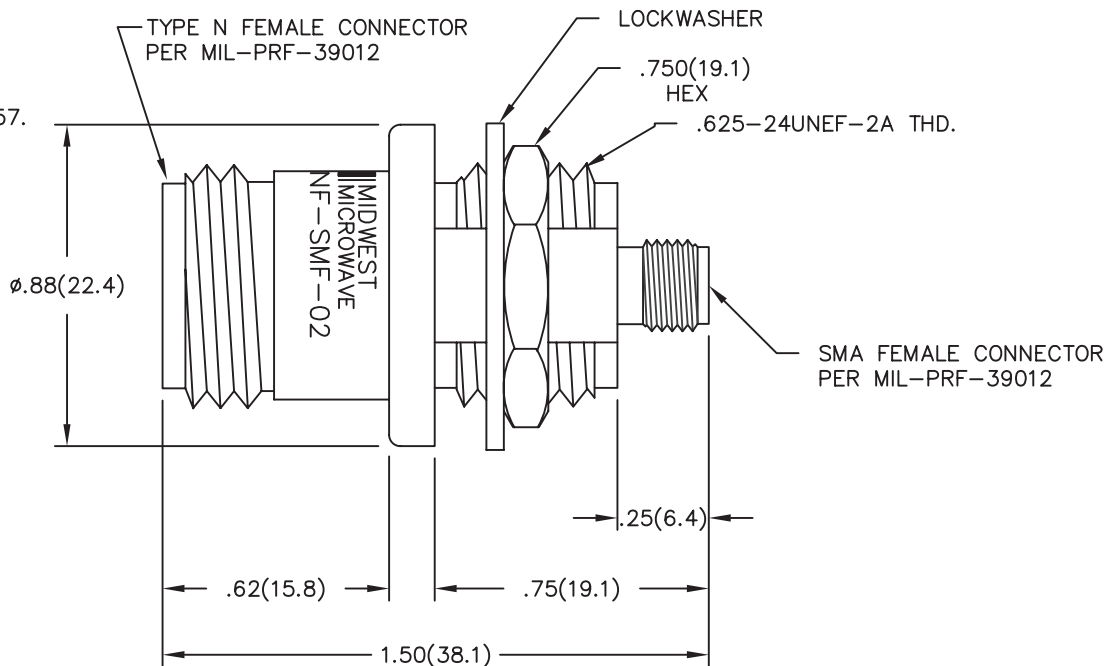
NOTES:

- 1.0 MATERIALS:
 - 1.1 HOUSING: STAINLESS STEEL PER ASTM-A582, TYPE 303.
 - 1.2 CENTER CONTACT: BERYLLIUM COPPER ROD ALLOY C172, PER ASTM-B196.
 - 1.3 DIELECTRIC: PTFE FLUOROCARBON PER ASTM-D1457.
- 2.0 PLATING:
 - 2.1 HOUSING: PASSIVATED PER MIL-F-14072 AND QQ-P-35
 - 2.2 CENTER CONTACT: GOLD PER MIL-G-45204, TYPE II, CLASS 2.

- 3.0 ELECTRICAL SPECIFICATIONS:
 - 3.1 FREQUENCY RANGE: DC to 18.0 GHz
 - 3.2 VSWR (MAX):
 - DC to 4.0 GHz: 1.04:1
 - 4.0 to 8.0 GHz: 1.07:1
 - 8.0 to 18.0 GHz: 1.12:1
 - 3.3 IMPEDANCE: 50 OHMS

4.0 DIMENENSIONS IN PARENTHESIS ARE IN MILLIMETERS.

5.0 MARKING: MARK UNIT AS SHOWN (REF.: INK-02669-27-13)



WAS DWG. # 03356-01-00

| REV. | DESCRIPTION | DATE |
|------|------------------|---------|
| - | RELEASED | 4/23/80 |
| A | ECR 6545 | 7/6/89 |
| A1 | UPDATE MODEL # | 7/20/92 |
| B | ECN ???????? | 1/23/96 |
| B1 | ADDED TITLEBLOCK | 3/10/05 |
| E | ECO 22121 | 8/17/09 |

| | | | |
|---|---|---|--|
| <p>NOTICE: The information contained in this drawing is proprietary and must not be used without the permission of Cinch Connectivity Solutions.</p> <p>UNLESS OTHERWISE NOTED DIMENSIONS ARE IN INCHES AND TOLERANCES ARE: 3 PLACE DECIMALS ±.005 2 PLACE DECIMALS ±.02 FRACTIONS ±1/64 PARALLELITY: T.I.R. _____ FLATNESS: T.I.R. _____ CONCENTRICITY: T.I.R. _____ ANGLES AND PERPENDICULARITY: ±1°</p> | | <p>CAGE CODE 34078</p> <p>MIDWEST MICROWAVE</p> | <p>TITLE ADAPTER TYPE N FEMALE TO SMA FEMALE OUTLINE DRAWING</p> |
| <p>DRAWN/DATE M.STAFFORD 1/23/96</p> | <p>ENG./DATE C.RIGGE 3/1/96</p> | <p>DRAWING NUMBER ADT-2599-NF-SMF-02-01</p> | <p>REV. E</p> |
| <p>CHECKED/DATE A.BEATTY 2/9/96</p> | <p>APPROVED/DATE</p> | <p>SCALE: 5=1</p> | <p>SHEET 1 of 1</p> |