

LMR / Public Safety Products

Volume I

Vehicular



WiFi



Portables



GPS

WELCOME

Larsen - a Pulse Brand - is pleased to bring you the new LMR/Public Safety Catalog. The goal of the catalog is to provide you with a “go to” source for all your LMR/Public safety antenna needs. Here you will find our most popular Portable Radio, Mobile, GPS, WiFi, WWAN, WiMax and Base Station antennas.

Larsen is a brand of Pulse Engineering. Headquartered in San Diego, California, Pulse is a world-wide leader in electronic component and subassembly design and manufacturing. Pulse is also a leading provider of antennas and antenna modules for mobile handsets and wireless devices. For more information on Pulse, please visit www.pulseeng.com.

Pulse provides a powerful synergy and new opportunities for customers, suppliers, employees, and channel partners. Customers can now source a diverse range of antennas from the combined antenna product lines. The Larsen brand also benefits from Pulse’s substantial engineering resources, including test equipment and anechoic chambers.

As always, your input and suggestions for improvement are important to us. Should you have questions or comments, please feel free to contact us.

PHONE: 1-800-ANTENNA (268-3662)
1-360-944-7551
FAX: 1-800-525-6749
1-360-944-7556
WEB: www.larsen-antennas.com
EMAIL: info@larsen.pulseeng.com

Your business is sincerely appreciated. We look forward to the opportunity to continue to serve your antenna requirements now and in the future.

TABLE OF CONTENTS

Portable Radio Antennas		Base Station Antennas	21
KuL DUCKIE	4		
SPOTS!	6		
		Representatives	22
Mobile Antennas			
Coils/Whips	11	Distributors (US)	24
Low Profile	13		
Stealth Blades	14	Distributors (Canada)	25
Cable Assemblies/Mounts	15		
		Distributors (Export/Intl)	26
GPS	17		
WiFi	19		
WWAN	20		
WiMax	20		

Portable Radio Antennas

Kulduckie and **SPOTS!**

Larsen's ExactTune KuLDUCKIES® (KD) are recognized around the world as the ultimate in high-performance portable antennas! Each antenna is constructed of superior conductive materials and hand-tuned to the frequency specified by the customer using a mechanical radio body simulator to give the most accurate frequency response. As most portable antennas are ground plane dependent, it is important to specify the application the antennas will be used on to ensure accurate factory tuning.

Larsen **SPOTS!** represent the leading edge in modern antenna technology. **SPOTS!** are built to the same high standards used in Larsen's OEM antenna production. These antennas are the same design and construction as supplied to many of the top radio producers.

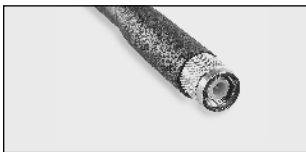
Kulduckie

All factory tuned KuLDUCKIES® are ExacTuned to your specified frequency. To order, replace the FREQ, UHF or VHF designation with your desired center frequency.



1/4-32X3/16

Male stud type mount with skirt (MX type)
KD2/12



TNC

TNC Male coaxial connector unskirted (TN type)
KD3/13



BNC

BNC Male coaxial connector unskirted
KD4/14

PART NUMBER	ELECTRICAL TYPE	FREQUENCY BAND	APPROX LENGTH
1/4-32x3/16			
KD2FREQHQ1	HQ Helical 1/4 λ	136 - 140 MHz	9 1/2"
KD2FREQHQ2	HQ Helical 1/4 λ	142 - 149 MHz	9 1/2"
KD2FREQHQ3	HQ Helical 1/4 λ	150 - 161 MHz	9 1/2"
KD2FREQHQ4	HQ Helical 1/4 λ	162 - 174 MHz	9 1/2"
KD12(freq)	1/4 λ	406 - 512 MHz	6"

TNC MALE			
KD3FREQHQ1	HQ 1/4 λ	136 - 140 MHz	9 1/2"
KD3FREQHQ2	HQ Helical 1/4 λ	142 - 149 MHz	9 1/2"
KD3FREQHQ3	HQ Helical 1/4 λ	150 - 161 MHz	9 1/2"
KD3FREQHQ4	HQ Helical 1/4 λ	162 - 174 MHz	9 1/2"
KD13(freq)	1/4 λ	406 - 960 MHz	6"
TNCQ	Q 1/4 λ	136 - 512 MHz	Varies by freq

BNC MALE			
KD4UHF	Helical 1/4 λ	406 - 512 MHz	3"
KD4VHF1	Helical 1/4 λ	136 - 141 MHz	8"
KD4VHF2	Helical 1/4 λ	142 - 149 MHz	8"
KD4VHF3	Helical 1/4 λ	150 - 161 MHz	8"
KD4VHF4	Helical 1/4 λ	162 - 174 MHz	8"
KD4FREQHQ1	HQ Helical 1/4 λ	136 - 140 MHz	9 1/2"
KD4FREQHQ2	HQ Helical 1/4 λ	142 - 149 MHz	9 1/2"
KD4FREQHQ3	HQ Helical 1/4 λ	150 - 161 MHz	9 1/2"
KD4FREQHQ4	HQ Helical 1/4 λ	162 - 174 MHz	9 1/2"
KD4150T	Helical 1/4 λ	130 - 180 MHz	Varies by freq
KD14(freq)	1/4 λ	406 - 960 MHz	6"
KD14FREQHW1	HW UHF 1/2 λ	315 - 409 MHz	16 1/2"
KD14FREQHW2	HW UHF 1/2 λ	416 - 504 MHz	16 1/2"
KD142MHW	HW VHF 1/2 λ	144 - 173 MHz	11 to 44 1/2"
BNCQ	Q 1/4 λ	136 - 512 MHz	Varies by freq

Portable Radio Antennas

Kulduckie

KULDUCKIE

PART NUMBER	ELECTRICAL TYPE	FREQUENCY BAND	APPROX LENGTH
10-24UNC2A			
KD15-98	Helical 1/4 λ	98 MHz	12"

5/16-32X3/8			
KD7FREQHQ1	HQ 1/4 λ	136 - 140 MHz	9 1/2"
KD7FREQHQ2	HQ 1/4 λ	142 - 149 MHz	9 1/2"
KD7FREQHQ3	HQ 1/4 λ	150 - 161 MHz	9 1/2"
KD7FREQHQ4	HQ 1/4 λ	162 - 174 MHz	9 1/2"

PL-259			
KD9FREQHQ1	HQ 1/4 λ	136 - 140 MHz	9 1/2"
KD9FREQHQ2	HQ 1/4 λ	142 - 149 MHz	9 1/2"
KD9FREQHQ3	HQ 1/4 λ	150 - 161 MHz	9 1/2"
KD9FREQHQ4	HQ 1/4 λ	162 - 174 MHz	9 1/2"
KD19(freq)	1/4 λ	406 - 512 MHz	6"
PQ	Q 1/4 λ	144 - 512 MHz	Varies by freq

5/16-24 THDS Female			
KD22VHF1	Helical 1/4 λ	136 - 141 MHz	8"
KD22VHF2	Helical 1/4 λ	142 - 149 MHz	8"
KD22VHF3	Helical 1/4 λ	150 - 161 MHz	8"
KD22VHF4	Helical 1/4 λ	162 - 174 MHz	8"
KD22FREQHQ1	HQ Helical 1/4 λ	136 - 140 MHz	9 1/2"
KD22FREQHQ2	HQ Helical 1/4 λ	142 - 149 MHz	9 1/2"
KD22FREQHQ3	HQ Helical 1/4 λ	150 - 161 MHz	9 1/2"
KD22FREQHQ4	HQ Helical 1/4 λ	162 - 174 MHz	9 1/2"



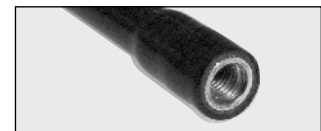
5/16-32X3/8

Male stud type mount
(KR type)
KD7



PL-259

Standard UHF Connector Male
KD9/19



516-24THDS Female

Female threaded
KD22

NOTE: Antennas are not to scale

1 800 ANTENNA

Portable Radio Antennas

SPOTS!

DECODING SPOTS! PART NUMBERS

Typical part number: SPHL10144

SP
SPOTS!
Product Line

HL
Helical
Antenna Type

10
Connector
Number

144
Center Cut
Frequency

CODE	ANTENNA TYPE
HL	Helical Type - Standard
HS	Helical Type - Short
WH	Whip
EN	End Fed 1/2 Wave
DA	1/2 Wave Dipole with Articulated Right Angle Connector
DP	1/2 Wave Dipole
WB	Wide Band

SPOTS! ANTENNA SELECTION GUIDE BY CONNECTOR TYPE

Determine connector type on the following pages and select the proper antenna based on frequency and type below. Field tunable antennas come with a cutting chart and cap to allow for tuning to exact frequency.

1/4-32X3/16 - MALE STUD CONNECTOR (MX TYPE)

CODE 10



1/4-32X3/16

Male stud type mount with skirt (MX type)

SPOTS! Connector Code 10

PART NUMBER	FREQUENCY BAND (MHZ)	ANTENNA TYPE	APPROX LENGTH
SPHL10156	150 - 162	Helical Standard 1/4 λ	8"
SPHS10156	152 - 160	Helical Short 1/4 λ	4"
SPHL10160	154 - 166	Helical Standard - 1/4 λ	8"
SPHL10160IC**	CC to 157	Helical Standard 1/4 λ	8"
SPHL10167	160 - 174	Helical Standard 1/4 λ	8"
SPHL10167IC**	CC to 167	Helical Standard 1/4 λ	8"
SPWH10420	395 - 445	Whip Standard 1/4 λ	6"
SPHS10420	403 - 437	Helical Short 1/4 λ	3"
SPWH10450	425 - 475	Whip Standard 1/4 λ	6"
SPHS10450	432 - 468	Helical Short 1/4 λ	3"
SPWH10470	450 - 490	Whip Standard 1/4 λ	6"
SPHS10470	452 - 488	Helical Short 1/4 λ	3"
SPHL10FT	Field Tunable 136 - 221	Helical Standard 1/4 λ	8"

** This antenna is designed with a longer "skirt" for use with newer ICOM radios.

Portable Radio Antennas

SPOTS!

M7 X 1.00 METRIC CONNECTOR (MD TYPE)

CODE 14

PART NUMBER	FREQUENCY BAND (MHZ)	ANTENNA TYPE	APPROX LENGTH
SPEN14832	806 - 866	Whip - 1/2 λ End Fed	7"
SPWH14832	782 - 882	Whip - Standard - 1/4 λ	3"
SPHS14832	800 - 865	Helical - Short - 1/4 λ	2 3/4"
SPEN14918	890 - 960	Half λ End Fed	6"
SPHL14FT	Field Tunable 136 - 221	Helical - Standard - 1/4 λ	7"



M7.0X1.0

Male stud type connector unskirted (MD type)
SPOTS! Connector Code 14

TNC CONNECTOR - STANDARD (TN TYPE)

CODE 17

PART NUMBER	FREQUENCY BAND (MHZ)	ANTENNA TYPE	APPROX LENGTH
SPDA17832	824 - 894	Center Fed Dipole	8"
SPDA17850/1900	824 -894 / 1850 - 1990	Center Fed Dipole	7 1/2"
SPDA17918	890 - 960	Center Fed Dipole	8"
SPDA171800	1710 - 1850	Center Fed Dipole	6 1/2"
SPDA171900	1850 - 1990	Center Fed Dipole	6 1/2"
SPDA172400	2400 - 2500	Center Fed Dipole	6"
SPDA17RP2400	2400 - 2500	Center Fed Dipole	6"
SPDA17RP918	890 - 960	Center Fed Dipole	8"
SPHL17FT	Field Tunable 136 - 221	Helical - Standard - 1/4 λ	8"
SPWH17FT	Field Tunable 400 -512	Whip - Standard - 1/4 λ	6"



TNC

TNC Male coaxial connector unskirted (TN type)
SPOTS! Connector Code 17

TNC CONNECTOR - COVERED (TNX TYPE)

CODE 18

PART NUMBER	FREQUENCY BAND (MHZ)	ANTENNA TYPE	APPROX LENGTH
SPHL18FT	Field Tunable 136 - 221	Helical - Standard - 1/4 λ	8"
SPWH18FT	Field Tunable 400 -512	Whip - Standard - 1/4 λ	6"
SPWH18832	782 - 822	Whip - Standard - 1/4 λ	2 3/4"



TNC-S

TNC Coaxial connector fully skirted (TNX type)
SPOTS! Connector Code 18

SMA MALE STANDARD - EXTENDED BASE - T1 (SMS TYPE)

CODE 20

PART NUMBER	FREQUENCY BAND (MHZ)	ANTENNA TYPE	APPROX LENGTH
SPWH20832	782 - 882	Whip - Standard - 1/4 λ	3"
SPHS20832	800 - 864	Helical - Short - 1/4 λ	2 3/4"
SPWH20918	863 - 973	Whip - Standard - 1/4 λ	3"
SPHS20918	872 - 954	Helical - Short - 1/4 λ	2 3/4"
SPHL20FT	Field Tunable 136 - 221	Helical - Standard - 1/4 λ	8"
SPWH20FT	Field Tunable 400 -512	Whip - Standard - 1/4 λ	6"



SMA MALE T1

SMA Male extended base (SMS Type)
SPOTS! Connector Code 20

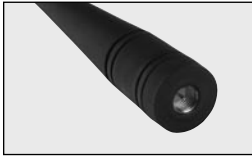
NOTE: Antennas are not to scale

1 800 ANTENNA

SPOTS!

Portable Radio Antennas

SPOTS!



SMA MALE T2

SMA Male flush base
(SM Type)

SPOTS! Connector
Code 24

SMA MALE - FLUSH BASE - T2 (SM TYPE)

CODE 24

PART NUMBER	CONNECTOR	FREQUENCY BAND (MHz)	ANTENNA TYPE	APPROX LENGTH
SPDA24832	SMA	824 - 894	Center Fed Dipole	9"
SPDA24850/1900	SMA	824 - 894 / 1850 - 1990	Center Fed Dipole	7 ½"
SPDA24918	SMA M T2	890 - 960	Center Fed Dipole	8"
SPDA241800	SMA M T2	1710 - 1880	Center Fed Dipole	6 ½"
SPDA241900	SMA M T2	1850 - 1990	Center Fed Dipole	6 ½"
SPDA242400	SMA	2400 - 2500	Center Fed Dipole	6"
SPDA24RP918	SMA M T2 RP	890 - 960	Center Fed Dipole	8"
SPDA24RP2400	SMA M T2 RP	2400 - 2500	Center Fed Dipole	6"
SPDP24832	SMA M T2	824 - 894	Center Fed Dipole	8"
SPDP24918	SMA M T2	890 - 960	Center Fed Dipole	
SPDP242400	SMA M T2	2400 - 2500	Center Fed Dipole	3 ½"
SPDP24RP2400	SMA M T2 RP	2400 - 2500	Center Fed Dipole	3 ½"
SPWH24832	SMA M T2	782 - 882	Whip - Standard - 1/4 λ	3"
SPHS24832	SMA M T2	800 - 864	Helical - Short - 1/4 λ	2 ¾"
SPWH24918	SMA M T2	863 - 973	Whip - Standard - 1/4 λ	3"
SPHS24918	SMA M T2	872 - 954	Helical - Short - 1/4 λ	2 ¾"
SPHL24FT	SMA M T2	Field Tunable 136 - 221	Helical - Standard - 1/4 λ	8"
SPWH24FT	SMA M T2	Field Tunable 400 - 512	Whip - Standard - 1/4 λ	6"
R380.500.125	SMA M T2 RP	2400 - 2500	Molded - 1/4 λ	2½"



SMA F T1

SMA Female flush insulator &
partial skirt (SF Type)

SPOTS! Connector Code 21

SMA FEMALE - NON STANDARD MOTOROLA TYPE (SF TYPE)

CODE 21

PART NUMBER	FREQUENCY BAND (MHz)	ANTENNA TYPE	APPROX LENGTH
SPWB21150	136 - 174	Helical - Standard - 1/4 λ	6 ¾"
SPHL21156	150 - 162	Helical - Standard - 1/4 λ	8"
SPHS21156	152 - 160	Helical - Short - 1/4 λ	4"
SPHL21167	160 - 174	Helical - Standard - 1/4 λ	8"
SPHS21167	162 - 172	Helical - Short - 1/4 λ	4"
SPWB21425	380 - 470	Helical - Standard - 1/4 λ	6 ½"
SPWH21450	425 - 475	Whip - Standard - 1/4 λ	6"
SPHS21450	432 - 468	Helical - Short - 1/4 λ	3"
SPHS21470	452 - 488	Helical - Short - 1/4 λ	3"
SPHS21490	475 - 512	Helical - Short - 1/4 λ	3"
SPWH21832	782 - 882	Whip - Standard - 1/4 λ	3"
SPHS21832	800 - 864	Helical - Short - 1/4 λ	2 ¾"
SPWH21918	863 - 973	Whip - Standard - 1/4 λ	3"
SPHS21918	872 - 954	Helical - Short - 1/4 λ	2 ¾"
SPHL21FT	Field Tunable 136 - 221	Helical - Standard - 1/4 λ	8"
SPWH21FT	Field Tunable 400 - 512	Whip - Standard - 1/4 λ	6"

Portable Radio Antennas

SPOTS!

SMA FEMALE STANDARD - FLUSH BASE - T2 (SFJ TYPE)

CODE 22

PART NUMBER	FREQUENCY BAND (MHZ)	ANTENNA TYPE	APPROX LENGTH
SPWB22150	136 - 174	Helical - Standard - 1/4 λ	6 ¾"
SPHL22156	150 - 162	Helical - Standard - 1/4 λ	8"
SPHL22167	160 - 174	Helical - Standard - 1/4 λ	8"
SPWB22425	380 - 470	Helical - Standard - 1/4 λ	6 ½"
SPWH22420	395 - 445	Whip - Standard - 1/4 λ	6"
SPWH22450	425 - 475	Whip - Standard - 1/4 λ	6"
SPHS22450	432 - 468	Helical - Short - 1/4 λ	3"
SPWH22470	450 - 490	Whip - Standard - 1/4 λ	6"
SPHS22470	452 - 468	Helical - Short - 1/4 λ	3"
SPHS22490	475 - 512	Helical - Short - 1/4 λ	3"
SPWH22832	782 - 882	Whip - Standard - 1/4 λ	3"
SPHS22832	800 - 864	Helical - Short - 1/4 λ	2 ¾"
SPWH22918	863 - 973	Whip - Standard - 1/4 λ	3"
SPHS22918	872 - 954	Helical - Short - 1/4 λ	2 ¾"
SPHL22FT	Field Tunable 136 - 221	Helical - Standard - 1/4 λ	8"
SPWH22FT	Field Tunable 400 -512	Whip - Standard - 1/4 λ	6"



SMA F T2

SMA Female recessed insulator & no skirt (SJF type)

SPOTS! Connector Code 22

SMA FEMALE STANDARD - HALF SKIRT BASE - T3 (SFU TYPE)

CODE 23

PART NUMBER	FREQUENCY BAND (MHZ)	ANTENNA TYPE	APPROX LENGTH
SPWB23150	136 - 174	Helical - Standard - 1/4 λ	6 ¾"
SPHL23156	150 - 162	Helical - Standard - 1/4 λ	8"
SPHL23167	160 - 174	Helical - Standard - 1/4 λ	8"
SPWB23425	380 - 470	Helical - Standard - 1/4 λ	6 ½"
SPWH23450	425 - 475	Whip - Standard - 1/4 λ	6"
SPHS23450	432 - 468	Helical - Short - 1/4 λ	3"
SPWH23470	450 - 490	Whip - Standard - 1/4 λ	6"
SPHS23470	452 - 488	Helical - Short - 1/4 λ	3"
SPWH23490	470 - 512	Whip - Standard - 1/4 λ	6"
SPHS23490	475 - 512	Helical - Short - 1/4 λ	3"
SPWH23832	782 - 882	Whip - Standard - 1/4 λ	3"
SPWH23918	863 - 973	Whip - Standard - 1/4 λ	3"
SPHS23918	872 - 954	Helical - Short - 1/4 λ	2 ¾"
SPHL23FT	Field Tunable 136 - 221	Helical - Standard - 1/4 λ	8"
SPWH23FT	Field Tunable 400 -512	Whip - Standard - 1/4 λ	6"



SMA F T3

SMA Female recessed insulator & partial skirt (SFU type)

SPOTS! Connector Code 23

NOTE: Antennas are not to scale

1 800 ANTENNA

SPOTS!

Portable Radio Antennas



BNC

BNC Male coaxial connector unskirted
SPOTS! Connector
 Code 15

BNC CONNECTOR (BN TYPE)

CODE 15

PART NUMBER	FREQUENCY BAND (MHZ)	ANTENNA TYPE	APPROX LENGTH
SPHS15450	432 - 468	Helical - Short - $1/4 \lambda$	3"
SPHL15FT	Field Tunable 136 - 221	Helical - Standard - $1/4 \lambda$	8"
SPWH15FT	Field Tunable 400 - 512	Whip - Standard - $1/4 \lambda$	6"



BNC-S

BNC Male coaxial connector fully skirted (BNX type)
SPOTS! Connector
 Code 16

BNC CONNECTOR COVERED TYPE (BNX TYPE)

CODE 16

PART NUMBER	FREQUENCY BAND (MHZ)	ANTENNA TYPE	APPROX LENGTH
SPHL16FT	Field Tunable 136 - 221	Helical - Standard - $1/4 \lambda$	8"
SPWH16FT	Field Tunable 400 - 512	Whip - Standard - $1/4 \lambda$	6"

Mobile Antennas

Coils/Whips

LOW BAND

Model	Type	Frequency (MHz)	Gain (dBd/dBi)	Max Height (In)	Power Rating (Watts)	Color	Cable Assembly/Mount
NMO27CK	Loaded 1/4 λ	27-30	0/2	52.53	200	Black/Stainless	Included
NMO30CK	Loaded 1/4 λ	30-34	0/2	57.5	200	Black/Stainless	Included
NMO40CK	Loaded 1/4 λ	45-50	0/2	57.5	200	Black/Stainless	Included
NMO50CK	Loaded 1/4 λ	47-54	0/2	52.5	200	Black/Stainless	Included

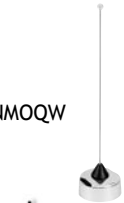
NMO Low Band



VHF

Model	Type	Frequency (MHz)	Gain (dBd/dBi)	Max Height (In)	Power Rating (Watts)	Color	Cable Assembly/Mount
NMOQW152	1/4 λ	152-162	0/2	21	200	Stainless	Order Separately*
NMOQC	1/4 λ	136-512	0/2	23	200	Black/Stainless	Order Separately*
NMOWBQC	1/4 λ	150-170	0/2	20	200	Black/Stainless	Order Separately*
NMO150CK	5/8 λ	144-174	3/5.2	51.5	200	Black/Stainless	Included
NMOWB150CK	1/2 λ	135-174	0/2	51.75	100	Black/Stainless	Included
OM150CK	1/2 λ	144-174	0/2	51.75	200	Black/Stainless	Included

NMOQW



NMOWBQC



UHF

Model	Type	Frequency (MHz)	Gain (dBd/dBi)	Max Height (In)	Power Rating (Watts)	Color	Cable Assembly/Mount
NMOQW450	1/4 λ	450-470	0/2	21	200	Stainless	Order Separately*
NMO4503CS	5/8 λ	450-470	3/5.2	19	200	Black/Stainless	Order Separately*
NMO450CK	5/8 Over 1/2	450-470	3.4/5.6	33	100	Black/Stainless	Included
NMOWB450CK	Wide Band	450-475	3.5/5.5	35.5	100	Black/Stainless	Included
NMO450CHW	1/2 λ	450-470	5.5/7.6	35.5	100	Black/Stainless	Order Separately*
KG450UDPL	1/2 λ	450-470	0/2	15	100	Black	Included

OM



NMO150



KG



* The most commonly used cable assembly/mount is the NMOKHFUD (NMO High Frequency Mount with 17' of UD (RG-58U Dual Shield)).

NOTE: Larsen springs (SPRING or SPRINGB) can be added to most mobile antennas.

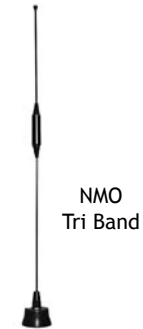
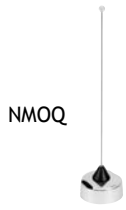


NOTE: Antennas are not to scale

1 800 ANTENNA

Mobile Antennas

Coils/Whips



700/800 MHz							
Model	Type	Frequency (MHz)	Gain (dBd/dBi)	Max Height (In)	Power Rating (Watts)	Color	Cable Assembly/Mount
NMQW700	1/4 λ	740-806	0/2	3	200	Stainless	Order Separately*
NMQW800	1/4 λ	806-896	0/2	3	200	Stainless	Order Separately*
NMQ700B	1/4 λ	740-806	0/2	4.5	200	Black	Order Separately*
NMQ800B	1/4 λ	806-960	0/2	4.5	200	Black	Order Separately*
NMO3E700B	5/8 over 1/4	740-806	3.2/5.4	13.5	200	Black	Order Separately*
NMO3E800B	5/8 over 1/4	806-866	3.2/5.4	13.5	200	Black	Order Separately*
NMO700	5/8 over 1/4	740-806	3.4/5.6	12.75	200	Black/Stainless	Order Separately*
NMO800	5/8 over 1/4	806-866	3.4/5.6	12.75	200	Black/Stainless	Order Separately*
OM800UD	5/8 Over 1/2	806-866	1/3.2	15.5	60	Black	Included
KG3E825UD	5/8 Over 1/2	806-896	3/5.2	13	60	Black	Included
KG3E786UD	5/8 Over 1/2	786-846	3/5.2	13	60	Black	Included
NMQSPEC800	5/8 Over 1/4	806-866	3.2/5.4	13.5	200	Stainless	Order Separately*

MULTIBAND							
Model	Type	Frequency (MHz)	Gain (dBd/dBi)	Max Height (In)	Power Rating (Watts)	Color	Cable Assembly/Mount
NMO150/450/800	Tri Band	150-165/ 450-470/ 806-940	2.14 dBi	16.5	100	Black	Order Separately*

* The most commonly used cable assembly/mount for this application is the NMOKHFUD (NMO High Frequency Mount with 17' of UD (RG-58U Dual Shield)).

NOTE: Larsen springs (SPRING or SPRINGB) can be added to most mobile antennas.



Mobile Antennas

Low Profile

VHF						
Model	Frequency (MHz)	Gain (dBd/dBi)	Size H x DIA (In)	Power Rating (Watts)	Color	Cable Assembly/ Mount
LP152NMO	151.02-152.98	0/2	3.75 x 4.5	60	Black	Order Separately*
LP156NMO	154.42-156.58	0/2	3.75 x 4.5	60	Black	Order Separately*

NOTE: Available in white with minimum order quantities. Contact factory for more information.



LP VHF

UHF						
Model	Frequency (MHz)	Gain (dBd/dBi)	Size (In)	Power Rating (Watts)	Color	Cable Assembly/ Mount
LP450NMO	450-470	0/2	1.5 x 4.5	100	Black	Order Separately*
LP450NMOW	450-470	0/2	1.5 x 4.5	100	White	Order Separately*
LPT450NMO	450-470	0/2	3.5 x 1.5	100	Black	Order Separately*
LPT450NMOW	450-470	0/2	3.5 x 1.5	100	White	Order Separately*



LP UHF

700/800/900 MHz						
Model	Frequency (MHz)	Gain (dBd/dBi)	Size (In)	Power Rating (Watts)	Color	Cable Assembly/ Mount
LPT700/800NMO	740-866	0/2	3.5 x 1.5	100	Black	Order Separately*
LPT800/900NMO	806-960	0/2	3.5 x 1.5	100	Black	Order Separately*
LPT800/900	806-960	0/2	3.5 x 1.5	60	Black	Order Separately*

NOTE: Available in white with minimum order quantities. Contact factory for more information.



LPT NMO

MULTIBAND						
Model	Frequency (MHz)	Gain (dBd/dBi)	Size (In)	Power Rating (Watts)	Color	Cable Assembly/ Mount
LPT825/19NMOHF	806-960/1710-1990/2400	3/4/3	3.5 x 1.5	10	Black	Order Separately*

NOTE: Available in white with minimum order quantities. Contact factory for more information.

NOTE: The LPT825/19NMOHF antenna requires an NMOHF-style mount.

* The most commonly used cable assembly/mount for this application is the NMOKHFUD (NMO High Frequency Mount with 17' of UD (RG-58U Dual Shield)).

NOTE: Antennas are not to scale

Mobile Antennas

Stealth Blades

Larsen Stealth Blades utilize printed circuit technology to provide superior performance and impedance bandwidth. It's ultra slim design allows mounting virtually anywhere without obstruction - in vehicles for voice and data, mobile computing or other mobile / portable terminal applications. The antenna can even be concealed inside the lining of garments worn for covert communications operations.

STEALTH BLADES - SINGLE BAND

The following single band Stealth Blade antennas have a gain of 2.14 dBi, a maximum power of 3 Watts and linear polarization.



MODEL	FREQ. RANGE (MHZ)	BANDWIDTH @1.5/2:1	DIMENSIONS	COAX	CONN
SB450FME12	450-470	20/30	10" x 0.75"	12' RG-316	FME
SB8003	806-896	67/90	5.2" x 0.75"	3' RG-174	NO CONN
SB80012	806-896	67/90	5.2" x 0.75"	12' RG-174	NO CONN
SB800FME3	806-896	67/90	5.2" x 0.75"	3' RG-174	FME
SB800FME12	806-896	67/90	5.2" x 0.75"	12' RG-174	FME
SB800MPL3	806-896	67/90	5.2" x 0.75"	3' RG-174	MPL
SB800MPL12	806-896	67/90	5.2" x 0.75"	12' RG-174	MPL
SB800SMA3	806-896	67/90	5.2" x 0.75"	3' RG-174	SMA
SB800SMA12	806-896	67/90	5.2" x 0.75"	12' RG-174	SMA
SB800TNC3	806-896	67/90	5.2" x 0.75"	3' RG-174	TNC
SB800TNC12	806-896	67/90	5.2" x 0.75"	12' RG-174	TNC
SB9003	890-960	55/70	5.2" x 0.75"	3' RG-174	NO CONN
SB90012	890-960	55/70	5.2" x 0.75"	12' RG-174	NO CONN
SB900SMA3	890-960	55/70	5.2" x 0.75"	3' RG-174	SMA
SB900SMA12	890-960	55/70	5.2" x 0.75"	12' RG-174	SMA
SB24003	2400-2500	60/105	2.7" x 0.75"	3' RG-174	NO CONN
SB24006	2400-2500	60/105	2.7" x 0.75"	6' RG-174	NO CONN
SB2400SMA3	2400-2500	60/105	2.7" x 0.75"	3' RG-174	SMA
SB2400SMA6	2400-2500	60/105	2.7" x 0.75"	6' RG-174	SMA
SB2400SMB3	2400-2500	60/105	2.7" x 0.75"	3' RG-174	SMB
SB2400SMB6	2400-2500	60/105	2.7" x 0.75"	6' RG-174	SMB
SB2400MMCX3	2400-2500	60/105	2.7" x 0.75"	3' RG-174	MMCX
SB2400MMCX6	2400-2500	60/105	2.7" x 0.75"	6' RG-174	MMCX

STEALTH BLADES - MULTI BAND

The following multi band Stealth Blade antennas have a gain of 2 dBi (Cell) / 2 dBi (PCS) and a maximum power of 3 Watts.

MODEL	FREQUENCY RANGE (MHZ)	BANDWIDTH (%) (SMR/CELL/PCS)	DIMENSIONS	COAX	CONN
R380.900.323	806 - 960 / 1710 - 1999	39/10/15	5" x .8" x .2"	10' RG-174	FME
R380.900.334	806 - 960 / 1710 - 1999	39/10/15	5" x .8" x .2"	10' RG-174	SMA

Mobile Antennas

Cable Assemblies/Mounts

When it comes to installing antennas, installers face new challenges every day. Automobile manufacturers create sleek new designs with curved surfaces utilizing less and less metal. In addition, people are less willing to drill a hole in expensive new cars. This creates problems when trying to install an antenna to achieve maximum performance.

Larsen, recognizing this issue, has developed a full line of permanent and temporary mounts to solve virtually every installation need.

Each Larsen mount is manufactured of the highest quality materials, including premium coax.

If you have a special requirement not represented, contact the factory. We will do our best to fill your need.

Note: Connectors are shipped loose/uninstalled with all mounting kits except MMR magnetic mounts. An FME universal adapter is installed on all kits.

NMO 3/4" HIGH FREQUENCY MOUNTS

Model	Coax	Connector
NMOKHFCX	CX (RG-58A/U)	No Conn
NMOKHFCXFME	CX (RG-58A/U)	FME CRIMP
NMOKHFCXMPL	CX (RG-58A/U)	MINI UHF
NMOKHFCXPL	CX (RG-58A/U)	PL-259
NMOKHFDS	DS (RG-58A/U Dual Shield)	No Conn
NMOKHFDSSMA	DS (RG-58A/U Dual Shield)	SMA
NMOKHFDSTNC	DS (RG-58A/U Dual Shield)	TNC
NMOKHFUD	UD (RG-58U Dual Shield)	No Conn
NMOKHFUDFME	UD (RG-58U Dual Shield)	FME
NMOKHFUDMPL	UD (RG-58U Dual Shield)	MPL
NMOKHFUDSMA	UD (RG-58U Dual Shield)	SMA
NMOKHFUDTNC	UD (RG-58U Dual Shield)	TNC
NMOKHFUDPL	UD (RG-58U Dual Shield)	PL-259T
NMOKHF200SMAI	LMR200	SMA Installed
NMOKHF200NCI	LMR200	N Crimp Inst

NMO 3/4" HIGH FREQUENCY THICK MOUNTS

Model	Coax	Connector
NMOKHFCXTHK	CX (RG-58A/U)	No Conn
NMOKHFDSTHK	DS (RG-58A/U Dual Shield)	No Conn
NMOKHFUDTHK	UD (RG-58U Dual Shield)	No Conn

All Larsen NMOHF (high frequency) mounts convert from low frequency applications to high frequency applications and back by pulling or replacing the center pin and insulator.

NMOHF mounts require a 3/4" hole for mounting and include 17' of coax.

NMOHF mounts accommodate roof surfaces from 0.1" to .03".

NMOHFTHK (thick) mounts accommodates roof surfaces up to 1/2" thick.



NMOHF Mount
Low Frequency Configuration



NMOHF Mount
High Frequency Configuration



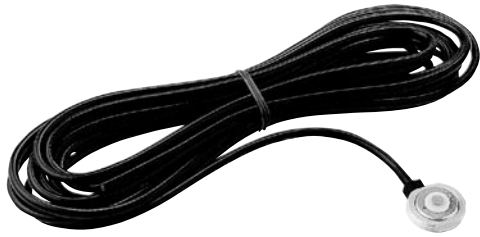
NMOHF Thick Mount
Low Frequency Configuration



NMOHF Thick Mount
High Frequency Configuration

Mobile Antennas

Cable Assemblies/Mounts



NMO 3/4" STANDARD MOUNTS

Model	Coax	Connector
NMOK	CX (RG-58A/U)	PL-259
NMOKMPL	CX (RG-58A/U)	MPL Crimp
NMOKUD	UD (RG-58U Dual Shield)	No Conn
NMOKUDPL	UD (RG-58U Dual Shield)	PL-259T
NMOKUDMPL	UD (RG-58U Dual Shield)	MPL Crimp

NMO 3/4" standard mounts require a 3/4" hole for mounting and include 17' of coax.



NMO HIGH FREQUENCY MAGNETIC MOUNTS

Model	Coax	Connector
NMOMMR	CX (RG-58A/U)	58FCP
NMOMMRFME	CX (RG-58A/U)	FME CRIMP
NMOMMRPL	CX (RG-58A/U)	PL-259
NMOMMRMPL	CX (RG-58A/U)	MPL CRIMP
NMOMMRTNC	CX (RG-58A/U)	TNC CRIMP
NMOMMRBNC	CX (RG-58A/U)	BNC CRIMP
NMOMMRN	CX (RG-58A/U)	N CRIMP
NMOMMRDSMPL	DS (RG-58A/U Dual Shield)	MPL CRIMP
NMOMMRDSPL	DS (RG-58A/U Dual Shield)	PL-259T
NMOMMR200SMA	LMR200	SMA
NMOMMR200N	LMR200	N

All Larsen NMOHF (high frequency) mounts convert from low frequency applications to high frequency applications and back by pulling or replacing the center pin and insulator.

NMOHF magnetic mounts are 3.5" in diameter, have a pull strength of 80 pounds and include 12' of coax.



NMO 3/8" THICK MOUNTS

Model	Coax	Connector
NMOKCX38THK	CX (RG-58A/U)	No Conn
NMOKUD38THK	DS (RG-58A/U Dual Shield)	No Conn

NMO 3/8" mounts require a 3/8" hole for mounting and include 17' of coax. The NMO38THK mount is designed for mounting surfaces with a thickness of 0.15" to 0.22".

GPS ANTENNAS

GPS Single Band

The GPS NMO single band antennas have the following specifications:

Frequency:	1575.4 MHz	Gain:	5 dBic
Pattern:	Herispherical	LNA Gain:	28 dB ± 2 dB
Polarization:	Right-Hand Circular	VSWR:	2.0:1
Mounting:	NMO Mount	Voltage:	5 V DC

SINGLE BAND NMO MOUNT

Model	Size (In)	Color	Cable	Conn
GPSNMO01	1.3 H x 2.9 D	White	Order Separately	Order Separately
GPSNMO02	1.3 H x 2.9 D	Black	Order Separately	Order Separately
GPSNMO07	1.3 H x 2.9 D	White	17' RG-58/U Dual Shield	SMB
GPSNMO08	1.3 H x 2.9 D	Black	17' RG-58/U Dual Shield	SMB
GPSNMO09	1.3 H x 2.9 D	White	17' RG-58/U Dual Shield	SMA
GPSNMO10	1.3 H x 2.9 D	Black	17' RG-58/U Dual Shield	SMA
GPSNMO11	1.3 H x 2.9 D	White	17' RG-58/U Dual Shield	BNC
GPSNMO12	1.3 H x 2.9 D	Black	17' RG-58/U Dual Shield	BNC



The GPS mag mount single band antennas have the following specifications:

Frequency:	1575.4 MHz	Gain:	5 dBi
Pattern:	Herispherical	LNA Gain:	26 dB ± 2 dB
Polarization:	Right-Hand Circular	VSWR:	Less than 2:1
Mounting:	Magnetic Mount	Voltage:	5 V DC*

SINGLE BAND MAGNETIC MOUNT

Model	Size (In)	Color	Cable	Conn
GPS0006	0.5" H x 1.75" L x 1.5" W	Black	17' RG-174	SMB
GPS0010	0.5" H x 1.75" L x 1.5" W	Black	17' RG-174	SMA
GPS0012	0.5" H x 1.75" L x 1.5" W	Black	17' RG-174	BNC

* 3 V DC versions available. Contact factory.



The GPS glass mount single band antennas have the following specifications:

Frequency:	1575.4 MHz	Gain:	5 dBic
Pattern:	Herispherical	LNA Gain:	28 dB ± 2 dB
Polarization:	Right-Hand Circular	VSWR:	2:1
Mounting:	Glass Mount	Voltage:	3 V DC

SINGLE BAND GLASS MOUNT

Model	Size (In)	Color	Cable	Conn
GPSGM03	0.6" H x 1.7" L x 1.7" W	Black	17" RG-174	SMB
GPSGM04	0.6" H x 1.7" L x 1.7" W	Black	17" RG-174	SMA
GPSGM05	0.6" H x 1.7" L x 1.7" W	Black	17" RG-174	BNC



NOTE: Antennas are not to scale

1 800 ANTENNA

GPS ANTENNAS

GPS Multi Band

The following GPS multi band antennas have the following specifications:

Frequency: 824-960 / 1710-2170 / 1575.4 MHz
VSWR: <2.0:1
Gain: 2 dBi/2 dBi/5 dBic
LNA Gain: 26 dB ± 2 dB
Pattern: Herispherical / Monopole / Monopole
Voltage: 3 or 5 V DC
Polarization: Vertical/Vertical/Right-Hand Circular
Coax: 16'1" RG-174/16'1" RG-174
Mounting: Direct Feed 3/4" hole



GPSCP



GPSCW

MULTI BAND

Model	Size (In)	Color	Conn
GPSCP00	7.6 L x 3.4 W x 1.3 D	Black	TNC/SMA
GPSCP01	7.6 L x 3.4 W x 1.3 D	White	No Conn
GPSCP02	7.6 L x 3.4 W x 1.3 D	Black	No Conn/SMA
GPSCP03	7.6 L x 3.4 W x 1.3 D	White	No Conn/SMA
GPSCP04	7.6 L x 3.4 W x 1.3 D	Black	No Conn/SMB
GPSCP05	7.6 L x 3.4 W x 1.3 D	White	No Conn/SMB
GPSCP06	7.6 L x 3.4 W x 1.3 D	Black	SMA/SMA
GPSCO07	7.6 L x 3.4 W x 1.3 D	White	SMA/SMA
GPSCP08	7.6 L x 3.4 W x 1.3 D	Black	MPL/SMA
GPSCP09	7.6 L x 3.4 W x 1.3 D	White	MPL/SMA
GPSCP10	7.6 L x 3.4 W x 1.3 D	Black	TNC/BNC
GPSCWCP00	3.9 L x 2.3 W x 3.2 D	Black	TNC/SMA
GPSCWCP01	3.9 L x 2.3 W x 3.2 D	Black	No Conn/SMA
GPSCWCP02	3.9 L x 2.3 W x 3.2 D	Black	No Conn/SMB
GPSCWCP03	3.9 L x 2.3 W x 3.2 D	Black	SMA/MPL
GPSCWCP04	3.9 L x 2.3 W x 3.2 D	Black	SMA/SMA

Mobile

WiFi SINGLE BAND MOBILES

Model	Frequency (MHz)	Gain (dBi)	Max Height (In)	VSWR	Cable Assembly/ Mount
EF2405NMO	2400-2500	5 (w/ground plane)	16	<1.5:1	Order Separately
EF4905NMO	4900-5000	5 (w.ground plane)	12	<1.5:1	Order Separately
NMO4E4900B	4900-5350	4	4.5	2:1	Order Separately
NMO5E2400B	2400-2500	5	8.5	1.5:1	Order Separately

NOTE: Larsen NMO WiFi antenna require the NMOHF-style mount.



Terminal - Access Point or Router

WiFi SINGLE BAND PORTABLE/TERMINAL

Model	Frequency (MHz)	Gain (dBi)	Max Height (In)	VSWR	Connector
R380.500.136	2400-2500	1	5.5	1.5:1	RP TNC
W1022	2500-2700	6	11.2	2.0:1	SMA Male
W1027	2400-2500	3.2	4.9	≤1.9:1	R SMA
W1030	2400-2500	2.0	3.2	≤2.0:1	R SMA
W1034	2400-2500	2.0	4.2	≤2.0:1	R SMA
W1037	2400-2500	3.2	6.6	≤2.0:1	R SMA
W1038	2400-2500	4.9	6.6	≤2.0:1	R SMA
W1049B050	2400-2500	2	4.1	2.0:1	I-PEX
W1059	2400-2500	5	7.7	2.0:1	SMA Male
W1160B180	2400-2500	2	6.9	2.0:1	RP SMA
W1164B075	2400-2500	2	4.1	2.0:1	I-PEX



WiFi DUAL BAND PORTABLE/TERMINAL

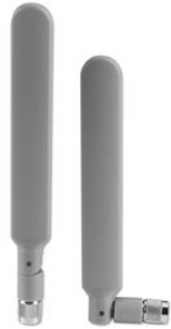
Model	Frequency (MHz)	Gain (dBi)	Max Height (In)	VSWR	Connector
R380.500.314	2400-2500/4900-5900	1.6/5	7.2	≤2.0:1	RPTNC
W1042	2400-2500/5150-5850	2	4.9	2.0:1	RP SMA
W1043	2400/5000	5	4.6	≤2.0:1	R SMA
W1045	2400/5000	5	4.1	≤2.0:1	R SMA



NOTE: Antennas are not to scale

WWAN ANTENNAS

SPDA17806/2170LAR



OC806/2170TNCLAR



WWAN

Model	Type	Frequency (MHz)	Gain (dBi)	VSWR	Dimensions (In)	Color
OC806/2170TNCLAR	In Building	806-960/1710-2170	1.5/2.5	1.8:1/1.6:1	2.75 H x 7 Dia	White
SPDA17806/2170LAR	PCB	806-960/1710-2170	.5/.5	2.5:1	7.7 H (Max)	Black

WiMax ANTENNAS

WiMax SINGLE BAND

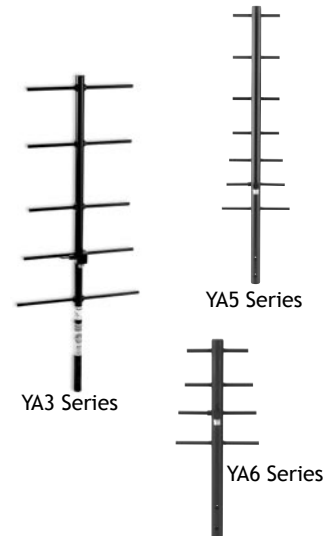


Model	Type	Frequency (MHz)	Gain (dBi)	Size (In)	VSWR	Connector
W1030A	1/4 λ Dipole	2300-2500	2	4.3	2.0:1	RP SMA Male
W1030PA	1/4 λ Dipole	2300-2500	2	4.3	2.0:1	RP SMA Male
W1038A	1/4 λ Dipole	2300-2500	5	7.8	2.0:1	RP SMA Male
W1041PA	1/4 λ Dipole	2300-2500	3	4.9	2.0:1	SMA Male
W1041PD	1/4 λ Dipole	5150-5850	3	4.9	2.0:1	SMA Male
W1042A	1/4 λ Dipole	2300-2500	3	4.9	2.0:1	RP SMA Male
W1042D	1/4 λ Dipole	5150-5850	3	4.9	2.0:1	RP SMA Male
W1042PA	1/4 λ Dipole	2300-2500	3	4.9	2.0:1	RP SMA Male
W1042PD	1/4 λ Dipole	5150-5850	3	4.9	2.0:1	RP SMA Male

BASE STATION ANTENNAS

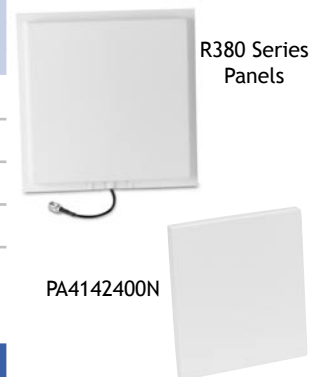
YAGIS

Model	Type	Frequency (MHz)	Gain (dBd/dBi)	VSWR	Length (In)	Power (Watts)	Feed Connection
YA3450WN	5-element	450-470	9/11	1.5:1	42.25	300	N Female
YA5740W	7-element	740-806	9/11	2.0:1	32.75	300	N Female
YA6740W	4-element	740-806	6/8	2.0:1	19.25	300	N Female
YA5800W	7-element	806-866	9/11	2.0:1	31.25	300	N Female
YA6800W	4-element	806-866	6/8	2.0:1	17.5	300	N Female
YA5900W	7-element	890-960	9/11	2.0:1	30	300	N Female
YA6900W	4-element	890-960	6/8	2.0:1	17.5	300	N Female



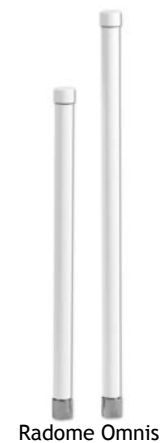
PANELS

Model	Frequency (MHz)	Gain (dBi)	VSWR	Size L x D x W (In)	Polarization	Connector
PA4142400N	2400-2485	14.2	1.5:1	9.4 x .75 x 8.5	Vertical	N Female
R380.500.217	2400-2500	15	1.5:1	12.1 x 12.1 x 1.3	Vertical	N Female
R380.500.218	2400-2500	15	1.5:1	12.1 x 12.1 x 1.3	Horizontal	N Female
R380.500.222	4940-4990	21	<1.5	12.1 x 12.1 x 1.3	Vertical	N Female



RADOME OMNIS

Model	Frequency (MHz)	Gain (dBi)	VSWR	Length (In)	Power (Watts)	Polarization	Connector
RO2404NM	2400-2485	4	2.0:1	9.5	20	Vertical	N Male
RO2406NF	2400-2500	6	2.0:1	12.25	20	Vertical	N Female
RO2406NM	2400-2500	6	2.0:1	12.25	20	Vertical	N Male
RO2408NF	2400-2500	8	2.0:1	20.75	4	Vertical	N Female
RO2408NM	2400-2500	8	2.0:1	20.75	4	Vertical	N Male
RO4910NF	4940-4990	10	2.0:1	18	4	Vertical	N Female
RO4910NM	4940-4990	10	2.0:1	18	4	Vertical	N Male



DUAL BANDS

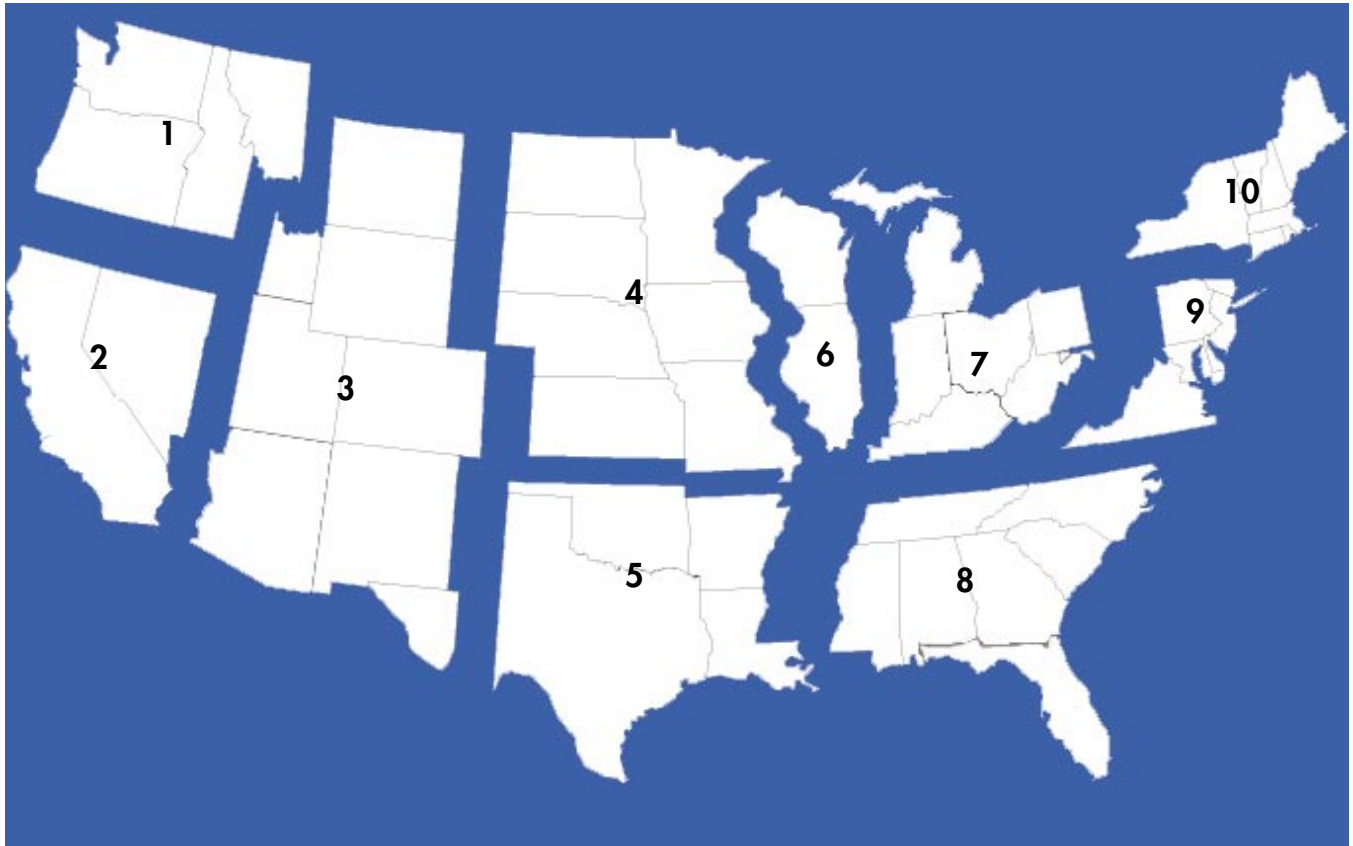
Model	Type	Frequency (MHz)	Gain (dBi)	Size (In)	Power (Watts)	Connector
R380.500.314	Dipole	2400-2500/4900-5900	1.6/5	7.15 Max	N/A	RPTNC
R380.900.908	Ceiling Mount	2400-2500/4900-5900	4.5/5	3 x 7 x 1.8	10	SMA Jack
R380.900.909	Corner Mount	2400-2500/4900-5900	5.5/9	4.75 x 3.5 x 1.5	20	RPTNC Plug



NOTE: Antennas are not to scale

1 800 ANTENNA

REPRESENTATIVES



1. **Alster Communications LLC**
Pacific NW (Including Alaska & Hawaii))
PO Box 12428
Mill Creek, WA 98082
Phone: 425-379-7574
800-365-1272
Fax: 425-379-2574
Web: www.alster.com
Email: steve@alster.com

2. **The Sales Group, Inc.**

Northern California / Northern Nevada
1050 Harvest Circle
Pleasanton, CA 94566
Phone: 925-484-5578
888-801-7253
Fax: 925-484-5404
Web: www.thesalesgroup.com
Email: mike@thesalesgroup.com

Southern California / Southern Nevada
23942 Craftsman Road
Calabasas, CA 91302
Phone: 818-222-0880
800-801-7253
Fax: 818-222-0833
Web: www.thesalesgroup.com
Email: larry@thesalesgroup.com

REPRESENTATIVES

3. **The Netmark Group**
17132 W. 64th Circle
Arvada, CO 80007
Phone: 303-938-2131
Fax: 303-942-7255
Web: www.thenetmarkgroup.com
Email: sbaroch@thenetmarkgroup.com
gdreese@thenetmarkgroup.com
4. **Nevco Wireless Marketing Group**
13949 Lakeview Drive
Des Moines, IA 50325
Phone: 515-225-9866
Fax: 515-225-8767
Web: www.nevcousa.com
Email: jerry@nevcousa.com
5. **The Cambridge Group, Inc.**
6901 Avenue K, Suite 106
Plano, TX 75074
Phone: 972-481-7877
Fax: 972-481-7887
Web: www.cgwireless.com
Email: sales@cgwireless.com
6. **Advanced/PLM Sales and Marketing Inc.**
1435 Holmes Road
Elgin, IL 60123
Phone: 847-695-5208
Fax: 847-695-6967
Web: www.advancedplm.com
Email: admin@advancedplm.com
7. **Great Lakes Communications Sales, Inc.**
2060 E. Harbor Road
Port Clinton, OH 43452
Phone: 419-734-4200
Fax: 419-734-4274
Web: www.greatlakescomm.com
Email: info@greatlakescomm.com
8. **Secom Systems, Inc.**
5255 Triangle Parkway, Suite 670
Norcross, GA 30092
Phone: 770-453-9411
Fax: 770-453-9786
Web: www.secomwireless.com
Email: bruce@secomwireless.com
9. **PMC Associates**
8 Crown Plaza, Unit 106
Hazlet, NJ 07730
Phone: 732-888-9300
Fax: 732-888-9388
Web: www.pmcrops.com
Email: info@pmcrops.com
10. **Johnson Associates**
70 Village Road
Weston, MA 02493-1338
Phone: 781-736-1960
Fax: 781-736-1961
Email: Byron-JAI@comcast.net

DISTRIBUTORS

UNITED STATES

Contact information below is for distribution warehouses which stock Larsen products. Distributors may have multiple sales locations. Please contact their main office or web site for further information.

Electro-comm Distributing Inc.

Phone: 800-525-0173
Fax: 303-371-8158
Web: www.electro-comm.com
Email: sales@electro-comm.com

Primus Electronic Corp.

Phone: 800-435-1636
Fax: 800-767-7605
Web: www.primuselectronics.com
Email: sales@primuselectronics.com

EPCOM - El Paso

Phone: 915-533-5119
Fax: 915-542-4701
Web: www.epcom.net
Email: sales@epcom.net

Pulstar

Phone: 800-634-4246
Fax: 651-490-7934
Web: www.pulstar.net
Email: sales@pulstar.net

EPCOM Sales Locations:

Miami, FL

Phone: 305-889-1127
Fax: 305-889-0652

San Diego, CA

Phone: 877-661-9160
Fax: 619-661-6159

Santa Fe Distributing

Phone: 800-255-6595
Fax: 800-255-6596
Web: www.s-f-d.com
Email: sales@s-f-d.com

Comark Distributing Inc.

Phone: 800-777-2708
Fax: 919-779-5189
Email: adamsl@intrex.net

Talley Communications

Phone: 800-949-7079
Fax: 562-906-8080
Web: www.talleycom.com
Email: sales@talleycom.com

Hutton Communications

Phone: 877-648-8866
Fax: 877-762-8274
Web: www.huttoncom.com
Email: sales@huttoncom.com

TESSCO Technologies Inc.

Phone: 800-472-7373
Fax: 410-229-0005
Web: www.tessco.com
Email: cs@tessco.com

Contact information below is for distribution warehouses which stock Larsen products. Distributors may have multiple sales locations. Please contact their main office or web site for further information.

Hutton Canada (Toronto)

Phone: 800-265-8685
Fax: 416-255-9179
Web: www.huttoncom.com
Email: toronto@huttoncom.com

Traeger Distributors Limited

Phone: 800-663-5691
Fax: 604-946-3052
Email: info@traeger.ca

Hutton Canada (Calgary)

Phone: 800-463-4793
Fax: 888-312-4444
Web: www.huttoncom.com
Email: calgary@huttoncom.com

Waverunner

Phone: 888-561-1113
Fax: 905-751-0607
Web: www.waverun.net
Email: harry@waverun.net

Hutton Canada Sales Locations:

Vaudreuil-Dorion (Montreal), Quebec

Phone: 450-424-6743
800-842-8990
888-455-7690

Winnipeg

Phone: 204-832-6162
877-940-8044
Fax: 204-832-6162

Vancouver, BC

Phone: 604-589-4466
888-948-8866
Fax: 604-599-4055

Allcan Electronic Distributors

Phone: 800-661-1905
Fax: 780-451-3052
Web: www.allcan.com
Email: order@allcan.com

Allcan Sales Location:

Vancouver, BC

Phone: 800-661-1905
Fax: 604-576-1932

DISTRIBUTORS

EXPORT / INTERNATIONAL

Contact information below is for distribution warehouses which stock Larsen products. Distributors may have multiple sales locations. Please contact their main office or web site for further information.

Benmar Telecomms

Albert Thum
5-2 Jalan 1/116B
Kuchai Entrepreneurs Park
Jalan Kuchai Lama
58200 Kuala Lumpur, Malaysia
Phone: 011 603 79830933
011 603 79830722
Fax: 011 603 79830999
Web: www.ben-tel.com
Email: bentelco@streamyx.com

Electronica Lama

Avenida 30 de Marzo, #124
Santo Domingo
Dominican Republic
Phone: 809 689 8155
809 689 3611
Fax: 809 685 6879
Web: www.electronicalama.com
Email: informacion@electronicalama.com

Sistemas y Servicios de Comunicación

20 Noviembre 805
Chihuahua, Mexico
Phone: 011 52 614 415 2525
Fax: 011 52 614 416 4298
Web: www.syscom.com.mx
Email: epcom@whc.net

Celltron Marketing Co.

47A G. Araneta Avenue
Quezon City, Philippines
Phone: 011 632 716 1448
011 632 714 3309
Fax: 011 632 242 2947
Email: hencel@mozcom.com

Rojone Pty Limited

61 Aero Road
Ingleburn NSW 2565
Sydney, Australia
Phone: 011 61 2 9829 1555
Fax: 011 61 2 9605 8812
Web: www.rojone.com.au
Email: sales@rojone.com.au

Wisco International Ltd.

690 W. 28th Street
Hialeah, FL 33010
Phone: 305-888-1676
Fax: 305-887-1624
Web: www.wisointl.com
Email: wisointl@wisointl.com

Dalinterradio Co., Ltd

103, Sheronov Street
Khabarovsk 680000 Russia
Phone: 011 4212 75 15 51
011 4212 75 15 45
Fax: 011 4212 75 15 45
Web: www.dalinterradio.ru
Email: inter@radio.khabarovsk.su

Supreme Landmobile & Wireless Corporation Sdn Bhd

No. 2, Jalan Salung 33/26
Shah Alam Tech Park
Seksyen 33, 40400 Shah Alam
Selangor Darul Ehsan, Malaysia
Phone: 011 6 03-5125 9688
Fax: 011 6 03-5125 9699
Web: www.slwholdings.com.my
Email: slwcorp@slwholdings.com.my



3611 NE 112th Avenue
Vancouver, WA 98682

Tel: 1-800-ANTENNA (268-3662)
1-360-944-7551
Fax: 1-800-525-6749
1-360-944-7556

www.larsen-antennas.com
info@larsen.pulseeng.com



Larsen is a registered trademark of Pulse Engineering, Inc.

Pulse Finland Oy

Takatie 6
FIN-90440 Kempele
FINLAND
Tel: +358 207 935 500
Fax: +358 207 935 501
antennasales.europe@pulseeng.com

Pulse Suzhou

33 Huo Ju Road
SND Hi-Tech Industrial Park
Suzhou New District
215011 Suzhou
P. R. China
Tel: +86 512 6807 9998
Fax: +86 512 6809 8023
antennasales.asia-pacific.pulseeng.com

Pulse Antennas Hungary

2900 Komárom
Zemplén Géza utca 5
Hungary
Tel: +36 34 887 500
Fax: +36 34 887 510
antennasales.europe@pulseeng.com

Pulse Korea

7th Floor, Young-Moon Bldg.
1263-2 Metan-Dong, Young-Tong-Ku
443-370 Suwon
Republic of Korea
Tel: +82 31 213 2001
Fax: +82 31 213 2025
antennasales.asia-pacific@pulseeng.com

Pulse Antennas USA

12220 World Trade Drive
San Diego, CA 92128
USA
Tel: +1 858 674 8100
Fax: +1 858 385 8003
antennasales.us@pulseeng.com

Pulse Antennas Taiwan

No 26
Kao Ching Road
Taoyuan Hsien
Taiwan
Tel: +886 3 464 1811
Fax: +886 3 464 1911
antennasales.tw@pulseeng.com