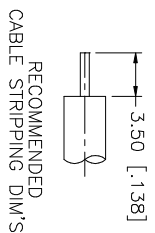
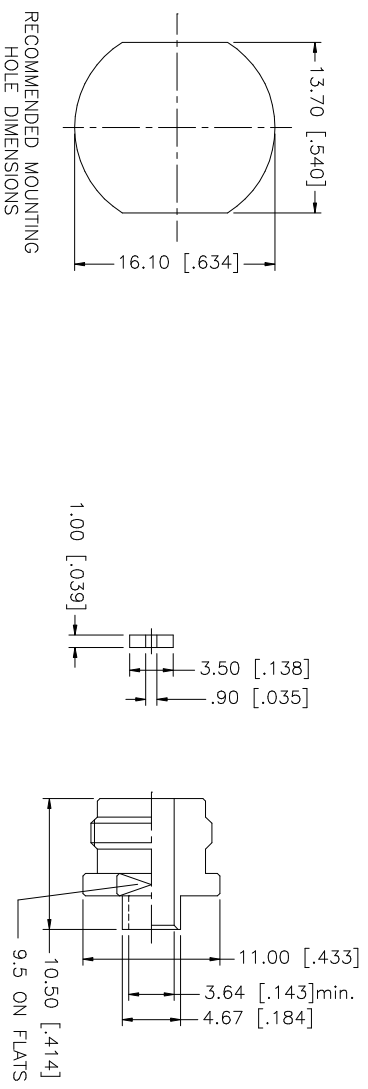
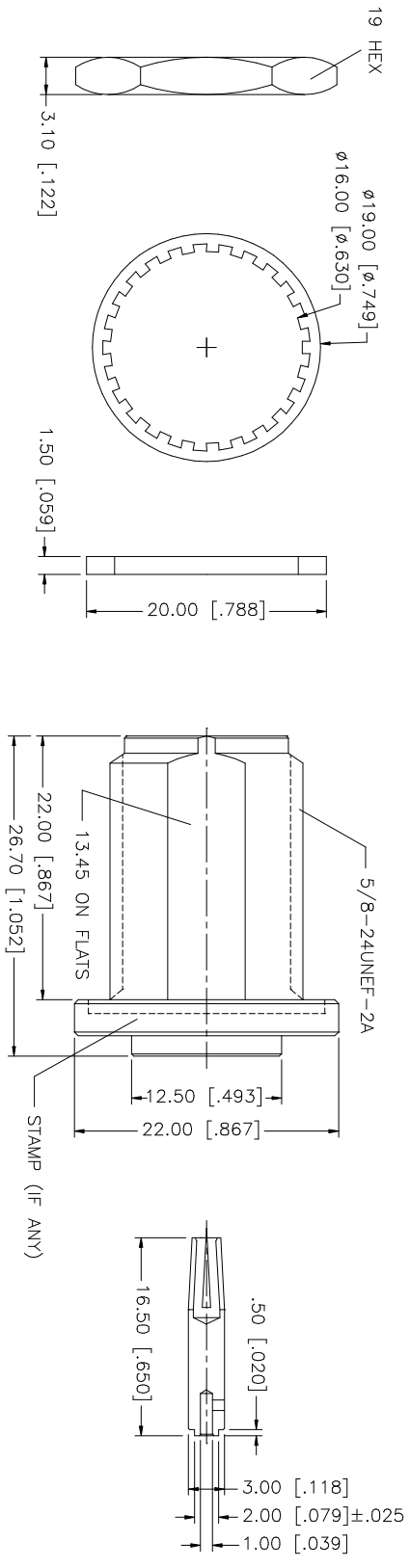


REV.	DATE	DESCRIPTION
A	12/09/03	UPDATE DRAWING FORMAT



NOTE:
 1. CRIMPED CONTACT PIN,
 HEX CRIMP SIZE .100"

QTY	DESCRIPTION	MATERIAL	FINISH	QTY	DO NOT SCALE DRAWING	CAD FILE	DWG. NO.	REV.	SIZE	SCALE
1	HEX NUT	BRASS	NEXCOTE	1		C:/172/172137.DWG	172137.DWG	A	A	NA
1	LOCK WASHER	BRASS	NEXCOTE	1						
1	GASKET	SILICONE	RED	1						
1	SOLDER NUT	BRASS	GOLD	1						
1	INSULATOR	TEFLON	NATURAL	1						
1	CONTACT PIN	PHOS. BRONZE	GOLD	1						
1	INNER BODY	BRASS	NEXCOTE	1						
1	INSULATOR	TEFLON	NATURAL	1						
1	OUTER BODY	BRASS	NEXCOTE	1						
	DESCRIPTION	MATERIAL	FINISH	QTY	DO NOT SCALE DRAWING	CAD FILE	DWG. NO.	REV.	SIZE	SCALE

Amphenol **Comnex**

N BULKHEAD DIRECT SOLDER JACK
 (FOR .141 SEMI RIGID CABLE)

172137

APPROVALS	DATE
DRAWN G.R.S.	12/09/03
CHECKED	
ISSUED	
SHEET 1 OF 1	

UNLESS OTHERWISE SPECIFIED DIMENSIONS ARE IN MILLIMETERS. DIMENSIONS IN () ARE IN INCHES AND FOR CUSTOMER REFERENCE ONLY. TOLERANCES FOR MILLIMETERS ARE:
 0.5 - 8mm ± 0.20mm
 8 - 30mm ± 0.40mm
 30 - 120mm ± 0.50mm
 UNLESS OTHERWISE SPECIFIED TOLERANCES FOR INCHES ARE:
 .020 - .315 = ± 0.002"
 .315 - 1.180 = ± 0.015"
 1.180 - 4.724 = ± 0.020"